



TITAN™

AIRLESS ACCESSORIES



CONTENTS

Aluminum Airless Gun	4-5
Stainless Steel Airless Guns	6-7
Airless Tips	8-9
Tip Technology	10-11
Guards & Filters	12-13
Reach Tools	14-17
Rollers	18-19
Hoses	20-21
Liquids	22-23
Manifolds	24-25
DT Steamer / PumpRunner	26
Modular Manifolds	27



TITAN™

WHY TITAN GENUINE PARTS AND ACCESSORIES?

ADVANCED PERFORMANCE

- Our accessories and equipment are built for hard work and long life
- The latest engineering technology ensures ease of use and dependability
- Our accessories and equipment meet and exceed the expectations of professionals who want to do the job right the FIRST time.

TOTAL RELIABILITY

- Proven technology - you finish every project quickly and profitably
- Superior design and construction maximizes the service life of your accessories and equipment
- Complete diversity – we have the right equipment for every project and sprayer application
- Half a century of getting the job done right – TITAN is the name you trust

UNSURPASSED SERVICE

- Dependable, reliable network of authorized sales and service distributors
- The best customer service in the industry to help you select the right equipment and accessories
- Professional application and service representatives ready to assist you with recommendations and technical support

FOR THE BEST, MOST PROFESSIONAL RESULTS –
USE ONLY GENUINE TITAN PARTS AND ACCESSORIES

RESIDENTIAL



COMMERCIAL



FINE FINISH



ROOFING



DECKS



ALUMINIUM AIRLESS GUNS

TITAN is the industry leader in spray gun technology

Countless hours of research and development have been devoted to manufacturing a full line of the best quality TITAN airless guns for every application imaginable - from the thinnest lacquers to the heaviest textures and roof coatings.

- Designed to minimize hand fatigue
- Solid, safe construction
- Precision trigger for accurate delivery

LX-40 AIRLESS GUN

Gun550-540

FEATURES & BENEFITS

- All-metal construction
- In-handle filter
- Tungsten carbide ball valve ensures long life
- Includes 517 TR1 reversible tip
- Pressure rated at 3000 PSI (20.7 MPa)



LX-50 AIRLESS GUN

Gun 0286021

FEATURES & BENEFITS

- All-metal construction
- In-handle filter
- Tungsten carbide ball valve ensures long life
- Includes 517 TR¹ reversible tip
- Pressure rated at 3000 PSI (20.7 MPa)



G-10XL AIRLESS GUN

- 4-Finger Gun with TR¹ Tip 0296235
- 4-Finger Gun with TR² Tip 0286029
- 2-Finger Gun with TR¹ Tip 0296236
- 2-Finger Gun with TR² Tip 0286028
- 4-Finger Gun Hose TR¹ Tip 0296326
- 2-Finger Gun Hose TR¹ Tip 0296327
- Repair Kit 0296294

FEATURES & BENEFITS

- Available with a 2 or 4 finger trigger
- All-metal construction
- In-handle filter
- Tungsten carbide ball valve ensures long life
- Swivel reduces hose kinks & assures effortless control
- Includes 517 TR¹ reversible tip
- Pressure rated at 3600 PSI (24.8 MPa)



INTERIOR



EXTERIOR



LX-80^{II} AIRLESS GUN

- 4-Finger Gun with TR¹ Tip 0550030
- 4-Finger Gun with TR² Tip 580-500
- 2-Finger Gun with TR¹ Tip 0550040
- 4 Finger Gun Hose TR¹ Tip 0550035
- 2 Finger Gun Hose TR¹ Tip 0550045
- Repair Kit 580-034A

FEATURES & BENEFITS

- Available in 4 finger trigger or 2 finger trigger
- All metal construction
- Tungsten carbide ball valve and seat insure long life and durability
- In-handle filter reduces clogging & increases tip life
- Swivel reduces hose kinks & assures effortless control
- Includes 517 TR¹ reversible tip
- Pressure rated at 3600 PSI (24.8 MPa)
- Lightweight, only 20 ounces (0.63 kg)



LX-80^{II} PLATINUM SERIES

- Gun 0550050
- Gun Hose and Tip Kit 0550055
- Repair Kit (Ball & Seat) 594-040
- Repair Kit (Complete Kit) 584-045

FEATURES & BENEFITS

- Unique two-piece seal assembly design allows removal of just the ball for easy maintenance
- Ultra-light trigger pull & form fitting handle reduces hand fatigue
- Reversible tungsten carbide seat offers twice the life of standard diffusers
- All metal construction
- Swivel reduces hose kinks and assures effortless control
- In-handle filter helps reduce tip clogs & increase tip life
- Includes 517 TR¹ reversible tip
- Pressure rated at 3600 PSI (24.8 MPa)



STAINLESS STEEL AIRLESS GUNS

TITAN is the industry leader in spray gun technology

Titan stainless steel spray guns hold up under extreme pressure and handle specialized coatings with ease. The S-series is designed for contractors that need to spray coatings at pressures from 3,900 PSI to 7,700 PSI and can handle corrosive coatings due to the stainless steel fluid passage. Just pull the trigger and the Titan S-series spray guns will deliver an excellent finish.

INDUSTRIAL



COMMERCIAL



S-3 AIRLESS GUN

Gun 0550060
 Gun Hose and Tip Kit 0550065
 Repair Kit 550-275

FEATURES & BENEFITS

- Stainless steel fluid passages
- In-handle filter
- Tungsten carbide ball valve & seat ensures long life & durability
- Easy 4 finger trigger pull
- 1/4" Swivel reduces hose kinks
- Includes 517 TR¹ reversible tip
- Pressure rated at 3900 PSI (27 MPa)



S-5 AIRLESS GUN

Gun 0550070
 Gun Hose and Tip Kit 0550075
 Repair Kit 520-025

FEATURES & BENEFITS

- All metal construction
- Stainless steel fluid passages
- Tungsten carbide ball valve & seat ensures long life & durability
- Front feed, filterless design for heavy coatings
- Easy 2 finger trigger pull
- Includes 517 TR¹ reversible tip
- Pressure rated at 5000 PSI (34.5 MPa)



S-7 AIRLESS GUN

Gun with 1/4" Swivel 550-260
 Gun with 3/8" Swivel 550-270
 Repair Kit 550-276

- Stainless steel fluid passages
- In-handle filter
- Available in two swivel sizes
- Tungsten carbide ball valve & seat insures long life & durability
- Easy 4 finger trigger pull
- Swivel reduces hose kinks
- Includes 517 heavy-duty reversible tip
- Pressure rated at 7700 PSI (53 MPa)



AIRLESS TIP TECHNOLOGY

Understanding Airless Tips

Airless spray tips are a key component to the successful operation of an airless spray system. They define the spray pattern, control the flow of the coating being sprayed and ultimately tell the pump how hard it must work. A proper understanding of airless tips is critical to the success of any airless application.

Airless Spray Tip Characteristics

It is important to remember that the orifice size, in conjunction with the fan-width, determines the spray characteristics of the tip.

Tip Wear

When beginning a project, choosing the right tip size and fan width will determine both coating consumption and production time. If the tip size is wrong — by either choice or through wear — mil thicknesses will be too heavy & the finish will be unprofessional.

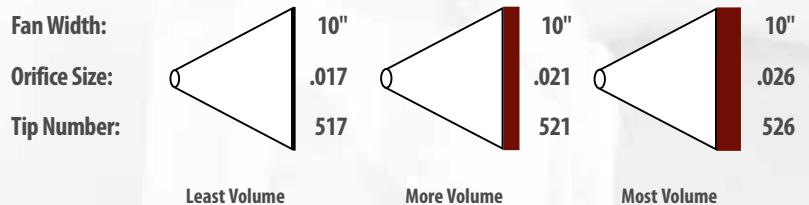
The spray pattern chart demonstrates what happens as a tip wears. As wear occurs, the pattern size decreases & the orifice size increases. You will have to make more passes to cover the same area. There is no standard rate of tip wear due to the variation of the abrasiveness of all coatings.

INDUSTRY LEADER IN TIP TECHNOLOGY

EXAMPLES FOR UNDERSTANDING AIRLESS TIPS

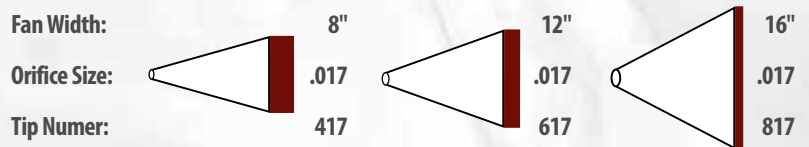
EXAMPLE A:

The larger the orifice with the same fan width, the greater the volume of paint applied to the area.



EXAMPLE B:

The larger the fan width with the same orifice means the same amount of material is being applied over a greater area. The result is less volume of paint per square inch.



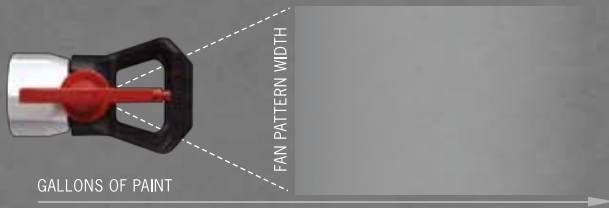
EXAMPLE OF A 517 TIP FAN PATTERN AS IT WEARS

SPRAY PATTERN WIDTHS			
New 517	Worn to 419	Worn to 321	Worn to 223
FLOW RATES			
.31 gpm (1.17 lpm)	.39 gpm (1.47 lpm)	.47 gpm (1.78 lpm)	.57 gpm (2.15 lpm)
FLOW RATE INCREASE			
0%	26%	52%	84%

THE INDUSTRY'S NEWEST TIP TECHNOLOGY

TR¹ - PREMIUM

- The best overall performing tip in the industry
- Fits all Titan and most industry spray gun guards
- An orifice that outlasts competitive tips delivering consistent firm thickness and less wasted paint
- Fan pattern stays wider longer



Product no. 695-XXX

TR² - VERSATILE

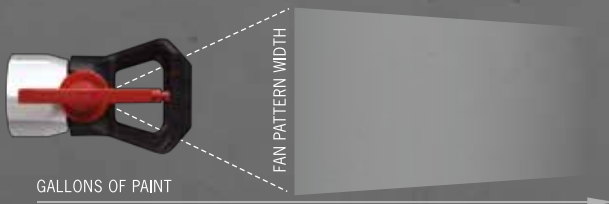
- Switch to wide or narrow fan patterns with a twist
- Speed and control at your fingertips
- One tip with two fan patterns
- Consistent film thickness when using wide or narrow fan pattern



Product no. 692-XXX

SC-6+ - VALUE

- New and improved with up to a 22% wider fan pattern
- Starts wider, stays wider than the Titan SC-6 and Performer tips
- The industry's longest lasting orifice resulting in less wasted paint
- Fits all Titan and most industry spray gun guards



Product no. 662-XXX

AIRLESS TIPS

Contractors know the quality of a spray tip can make or break a project

That is why smart contractors don't take a chance on cheap tips that wear out quickly, waste coatings and deliver an uneven finish. TITAN airless tips are renowned in the industry for their performance, durability and long life.

- Titan offers a full spectrum of sprayer tips for a full range of applications
- Highest quality tungsten carbide yields the longest tip life
- Precision machined for a perfect fan pattern
- Solvent-proof seal holds up against harshest coatings

COMMERCIAL



FLAT TIP

- Precision machined from the highest quality Tungsten Carbide.
- PSI pressure rated to 5000 PSI



Product no. 002-XXX

HIGH PRESSURE TIP

- Heavy duty reversible tip
- Pressure rated to 7700 PSI
- Insertion and knockout tool for easy assembly



Product no. 721-XXX

SYNERGY FINE FINISHING TIP

- Pressure rated at 5000 PSI (34.5 MPa)
- Particle size up to 27% smaller than a standard tip
- Interchangeable with industry standard safety guards
- Ideal for lacquers, stains, and clear coats
- Insertion and knockout tool for easy assembly
- Increased transfer efficiency



Product no. 671-XXX

ADJUSTABLE SELF CLEANING TIP

- Fully adjustable fan widths from 2" to 24" reduce overspray
- Perfect when changing from spraying walls to cutting in for trim work or around windows
- Self-cleaning feature eliminates costly downtime



Product no. 341-XXX

Product Number	Orifice Range	Coating Range
341-015	.005-.018	Lacquer & Stain
341-020	.007-.019	Lacquer & Stain
341-024	.007-.026	Lacquer & Enamels
341-028	.011-.026	Lacquer & Enamels
341-041	.017-.035	High Builds
341-049	.021-.054	Very Heavy

FINE FINISH METERING ORIFICE

- Designed to produce a more complete atomization of the spray pattern
- Increases your transfer efficiency by allowing you to spray at lower pressures
- When ordering, always use a metering orifice that is at least .004 larger than the spray tip being used. Example: a .019 tip should be used with a .023 Metering Orifice



Product no. 512-XXX

Product Number	Orifice in Inches	Max. Tip Size Recommended
512-011	.011	.007
512-013	.013	.009
512-015	.015	.011
512-018	.018	.013
512-021	.021	.017
512-023	.023	.019
512-026	.026	.021
512-031	.031	.026
512-035	.035	.031
512-039	.039	.035
512-049	.049	.043
512-059	.059	.045

AIRLESS TIP SIZES



TR¹ (695-XXX)

		Orifice Sizes – Inches									
		.009	.011	.013	.015	.017	.019	.021	.025	.027	
Fan Pattern Width	2 - 4	51 - 102									
	4 - 6	102 - 152	209	211	213	215	217				
	6 - 8	152 - 203		311	313	315	317				
	8 - 10	203 - 254		411	413	415	417				
	10 - 12	254 - 305			513	515	517	519	521	525	
	12 - 14	305 - 356									627
	Flow (gpm)	---	0.09	0.12	0.18	0.24	0.31	0.39	0.47	0.67	0.78
	Flow (lpm)	---	0.34	0.45	0.68	0.91	1.17	1.47	1.78	2.53	2.95



SC-6+ (662-XXX)

		Orifice Sizes – Inches																					
		.007	.009	.011	.013	.015	.017	.019	.021	.023	.025	.027	.029	.031	.033	.035	.039	.043	.045	.051	.055		
Fan Pattern Width	2 - 4	51 - 102	107	109	111	113	115	117															
	4 - 6	102 - 152	207	209	211	213	215	217	219	221	223	225	227	229	231	233	235						
	6 - 8	152 - 203	307	309	311	313	315	317	319	321	323	325	327	329	331	333	335						
	8 - 10	203 - 254	407	409	411	413	415	417	419	421	423	425	427	429	431	433	435	439	443	445	451	455	
	10 - 12	254 - 305		509	511	513	515	517	519	521	523	525	527	529	531	533	535	539	543	545	551	555	
	12 - 14	305 - 356		609	611	613	615	617	619	621	623	625	627	629	631	633	635	639	643	645	651	655	
	14 - 16	356 - 406																					
	16 - 18	406 - 457								719	721												
		Flow (gpm)	---	0.05	0.09	0.12	0.18	0.24	0.31	0.39	0.47	0.57	0.67	0.78	0.91	1.03	1.17	1.32	1.64	1.99	2.18	2.80	3.26
		Flow (lpm)	---	0.19	0.34	0.45	0.68	0.91	1.17	1.47	1.78	2.15	2.53	2.95	3.44	3.89	4.42	4.99	6.20	7.52	8.24	10.58	12.32



TR² (692-XXX)

		Orifice Sizes – Inches										
		.011	.013	.015	.017	.019	.021	.023	.027	.031	.035	
Fan Pattern Width	2 - 4	51 - 102										
	4 - 6	102 - 152										
	6 - 8	152 - 203	311	313								
	8 - 10	203 - 254			415	417						
	10 - 12	254 - 305			515	517	519	521			535	
	12 - 14	305 - 356									635	
	14 - 16	356 - 406										
	16 - 18	406 - 457								831		
	18 - 20	457 - 508										
	20 - 22	508 - 559										
22 - 24	559 - 610											
24 - 26	610 - 660											
	Flow (gpm)	---	0.12	0.18	0.24	0.31	0.39	0.47	0.57	0.78	1.03	1.32
	Flow (lpm)	---	0.45	0.68	0.91	1.17	1.47	1.78	2.15	2.95	3.89	4.99



WIDESPRAV (661-XXXX)

		Orifice Sizes – Inches											
		.019	.021	.023	.025	.027	.029	.031	.033	.035	.037		
Fan Pattern Width	24 - 26	610 - 660	1219	1221	1223	1225	1227	1229	1231	1233	1235	1237	
		Flow (gpm)	---	0.39	0.47	0.57	0.67	0.78	0.91	1.03	1.17	1.32	1.47
		Flow (lpm)	---	1.47	1.78	2.15	2.53	2.95	3.44	3.89	4.42	4.99	5.56



SYNERGY FINE FINISHING TIP (671-XXX)

Orifice Sizes – Inches

Fan Pattern Width	Inches	MM	.008	.010	.012	.014
	2 - 4	51 - 102				
4 - 6	102 - 152	208	210	212	214	
6 - 8	152 - 203	308	310	312	314	
8 - 10	203 - 254	408	410	412	414	
10 - 12	254 - 305		510	512		
12 - 14	305 - 356			612		
Flow (gpm)	---	0.07	0.11	0.16	0.21	
Flow (lpm)	---	0.26	0.42	0.60	0.79	

TR² FINE FINISHING TIP (693-XXX)

Orifice Sizes – Inches

Fan Pattern Width	Inches	MM	.010	.012	.014
	10 - 12	254 - 305	510	512	514
Flow (gpm)	---	0.11	0.16	0.21	
Flow (lpm)	---	0.42	0.60	0.79	

HIGH PRESSURE TIPS (721-XXX)

Orifice Sizes – Inches

Fan Pattern Width	Inches	MM	.017	.019	.021	.023	.025	.027	.029	.031	.033	.035	.039
	2 - 4	51 - 102	117	119		123							
4 - 6	102 - 152	217	219	221	223								
6 - 8	152 - 203												
8 - 10	203 - 254												
10 - 12	254 - 305	517	519	521	523	525	527	529	531	533	535	539	
Flow (gpm)	---	0.31	0.39	0.47	0.57	0.67	0.78	0.91	1.03	1.17	1.32	1.64	
Flow (lpm)	---	1.17	1.47	1.78	2.15	2.53	2.95	3.44	3.89	4.42	4.99	6.20	

FLAT TIPS (002-XXX)

Orifice Sizes – Inches

Fan Pattern Width	Inches	MM	.007	.009	.011	.013	.015	.017	.018	.019	.021	.023	.025	.026	.027	.029	.031	
	2 - 4	51 - 102	107	109	111		115	117			119	121						
4 - 6	102 - 152	207	209	211	213	215	217			219	221	223	225					331
6 - 8	152 - 203		309	311	313	315	317	318	319	321	323	325				327		531
8 - 10	203 - 254	407	409	411	413	415	417	418	419	421	423	425	426	427	429	431		831
10 - 12	254 - 305	507	509	511	513	515	517	518	519	521	523	525			527	529		1031
12 - 14	305 - 356	607		611	613	615	617	618	619	621	623	625	626	627	629	631		
14 - 16	356 - 406				713	715	717		719	721	723	725			727	731		
16 - 18	406 - 457			811	813	815	817	818	819	821	823	825	826	827	831			
18 - 20	457 - 508				913	915		918			923	925	926		931			
20 - 22	508 - 559					1015	1017	1018		1021					1031			
22 - 24	559 - 610																	
24 - 26	610 - 660				1213	1215		1218		1221	1223		1226		1229	1231		
26 - 28	660 - 711																	
Flow (gpm)	---	0.05	0.09	0.13	0.18	0.24	0.31	0.35	0.39	0.47	0.57	0.67	0.73	0.78	0.91	1.03		
Flow (lpm)	---	0.19	0.34	0.49	0.68	0.91	1.17	1.32	1.47	1.78	2.15	2.53	2.76	2.95	3.44	3.89		

Orifice Sizes – Inches

Fan Pattern Width	Inches	MM	.033	.035	.036	.039	.041	.042	.043	.047	.049	.052	.055	.058	.062	.072
	2 - 4	51 - 102														
4 - 6	102 - 152															
6 - 8	152 - 203			336	339		342					352				
8 - 10	203 - 254	433	435	436	439	441		443		449	452					472
10 - 12	254 - 305		535	536	539		543		549	552			558	562		
12 - 14	305 - 356	633	635	636		641	643			652	655					
14 - 16	356 - 406	733	735													
16 - 18	406 - 457		835	836	839		843	847						862		
18 - 20	457 - 508			936										962		
20 - 22	508 - 559															
22 - 24	559 - 610				1136			1143								
24 - 26	610 - 660															
26 - 28	660 - 711				1336											
Flow (gpm)	---	1.17	1.32	1.40	1.64	1.81	1.90	1.99	2.38	2.58	2.91	3.26	3.62	4.14	5.58	
Flow (lpm)	---	4.42	4.99	5.29	6.20	6.84	7.18	7.52	9.00	9.75	11.00	12.32	13.68	15.65	21.09	

GUARDS & FILTERS

Nothing destroys a piston or a gun tip faster than debris in the coating. That's why you need the best paint filters available. TITAN gun filters and manifold filters are designed for long life and maximum protection.

- Made from stainless steel for strength and service
- Wide variety of mesh sizes from 10 to 100
- Engineered for durability and long life

GUN FILTER



MANIFOLD FILTER



NO BUILD GUARD

FEATURES & BENEFITS

- New feature allows rotation on gun.
- Golf ball like dimples allow for better airflow and less paint build up.
- Design allows guard to be installed without tools.
- Seal cavity on safety guard has large "flats" for quick & easy installation of seal.

0289228 7/8"-14 - 5000 PSI (34.5 MPa) Titan, Graco, ASM

Interchangeable with most industry spray guns.



Product No. 0289228

HIGH PRESSURE TIP GUARD

661-027 7/8"-14 - 7700 PSI (53 MPa) Titan, Graco, ASM

Interchangeable with most industry spray guns.



Product No. 661-027

ADJUSTABLE TIP GUARD

450-100A 7/8"-14 - 5000 PSI Titan, Graco, ASM

Interchangeable with most industry spray guns.



FLAT TIP GUARD

0153003 7/8"-14 - 5000 PSI

Interchangeable with most industry spray guns.



SEALS

- Metal retainer 651-040
- Latex black seal 651-042
- Solvent resistant white seal..... 651-020
- Solvent resistant white seal, 6 pack 661-021
- Solvent resistant seal & retainer kit, 5 pack..... 661-020
- Solvent resistant seal & retainer kit, 12 pack..... 651-060
- 1/8" Gasket kit, 12 pack 711-612
- 1/16" Gasket kit, 12 pack 711-606



IN-LINE FILTER

FEATURES & BENEFITS

Designed for added filtration or when using a gun without a filter.

Product No. 550-223



GUN & PUMP FILTERS

Reverse thread design prevents filter from unscrewing when handle is removed for cleaning & replacement.

THREADED

Filters	Bulk	2 Pack
*Coarse (Green)	540-030	500-200-03
Medium (White)	540-060	500-200-06
Fine (Yellow)	540-100	500-200-10
Extra Fine (Red)	540-150	500-200-15

For use with LX-80" & LX-80 Platinum

*Manifold Filter for 330 & 440i.

UNTHREADED

Filters	Bulk	2 Pack
*Coarse (Green)	581-059	0089957
Medium (White)	581-060	0089958
Fine (Yellow)	581-062	0089959
Extra Fine (Red)	581-061	0089960

For use with G-10, LX-30, LX-40, LX-50, LX-70, S-3 and S-7.

*Manifold Filter for 2155 & 400.



PUMP MANIFOLD FILTERS

Mesh No.	Product No.
Mastic-0 mesh	930-004
Coarse-5 mesh	930-005
*Medium-50 mesh	930-006
Fine-100 mesh	930-007

For use on PowrTwin 4900, 6900, 8900, 12000X Plus (Also 5500 & 10000)

*Note: Standard with sprayer, includes ball.

Mesh No.	Product No.
Coarse-5 mesh	920-001
*Medium-50 mesh	920-004
Fine-100 mesh	920-005

For use on Hydra, PowrTwin 3500 & 4500

*Note: Standard with sprayer, excludes ball. Ball check sold separately 920-103



Mesh	Product No.
Coarse-30 mesh	730-067-30
Medium-60 mesh	730-067
Fine-100 mesh	730-067-10

For use on IMPACT 440-1140, & 640ix -1140ix

Mesh	Product No.
Coarse-30 mesh	761-042
Medium-60 mesh	761-043
Fine-100 mesh	761-041

For use on Titan E15, E20, G40 & G55



INLET SCREENS

Never operate your siphon or direct immersion airless pump without this in place. Also known as a "rock catcher", this product serves as a filtering screen & prevents any debris from entering the fluid section that can cause damage & expensive repairs.

INLET SCREENS (SMALL)

Mesh	Product No.
30 mesh (Fine)	700-900
10 mesh (Coarse)	700-805
30 mesh (Male Thread)	0552947

INLET SCREENS (LARGE)

Mesh	Product No.
30 mesh (Fine)	710-191
10 mesh (Coarse)	710-046

HYDRAULIC & PNEUMATIC INLET SCREENS

Units	Product No.
4900, 6900, 8900, 12000 Plus and XLT	103-627
All GHD	710-046
Hydra Pro IV	103-627



REACH TOOLS

When your arms just aren't long enough

Ladders and step stools have their limits. Wouldn't it be nice to reach high places, to reach over foliage, to reach all the way to a high ceiling without ever leaving the floor or the ground? TITAN offers a collection of reach tools that allow you to apply every coating imaginable to out-of-reach areas. From gun extensions to extension poles and pole guns, TITAN is your source for easier and more efficient coating application.

- Maximize the speed and efficiency of your operation
- Minimize danger – eliminate reaching from ladders
- Get the job done safely and quickly the first time

EXTENDED REACH



GUN EXTENSIONS - ALUMINUM

- Lightweight and easy to handle.
- Can be used with most brands of airless spray guns.
- Pressure rated at 3600 PSI (24.8 MPa).

7/8" G-Thread - Standard

6" (15 cm)	Product No. 651-070
12" (30 cm)	Product No. 651-071
18" (45 cm)	Product No. 651-072
24" (60 cm)	Product No. 651-073



HIGH PRESSURE GUN EXTENSIONS - STAINLESS STEEL

- Heavy duty stainless steel.
- Can be used with most brands of airless spray guns.
- Pressure rated at 7700 PSI (53 MPa).

7/8" G-Thread - Standard

6" (15cm)	Product No. 611-280
12" (15cm)	Product No. 611-281
18" (15cm)	Product No. 611-282
24" (15cm)	Product No. 611-283



NON-SPIT VALVE

- Eliminates spitting that occurs when spraying with gun and pole extensions
- Universal connection works with most industry extensions and guns

Non-Spit Valve G-Thread Std.

Product No. 0521012



EXTENSION POLE

These lightweight aluminum extensions are constructed with inner core ribs which reinforce the pole & greatly increase their rigidity. The inner core rib construction allows different length poles to be easily coupled together up to 12', while maintaining the proper rigidity to suit most job conditions.

- Reach high out-of-the-way places when spray or pressure rolling.
- Adapts to most airless guns.
- Includes 310-062 extension pole coupling.
- Pressure rated at 3600 PSI (24.8 MPa).

1.5' (.46 m) Pole	Product No. 310-381-1
3' (.9 m) Pole	Product No. 310-383-1
6' (1.8 m) Pole	Product No. 310-386-1
3' Extension Pole with Swivel Head, 7/8" Nut	Product No. 310-390
6' Extension Pole with Swivel Head, 7/8" Nut	Product No. 310-391



SWIVEL HEAD

For use with Titan Gun Extensions & Extension Poles.
Permits a 260° rotation for greater spraying versatility & accessibility.

7/8" G-Thread Swivel Head - Female	Product No. 651-139
7/8" G-Thread Swivel Head - Male	Product No. 711-600



ANGLE ADAPTER ASSEMBLY

Adapt any extension pole to any standard airless gun. Because of its right-angle design, the angle adapter allows the pole to extend from the gun at the same angle as the handle. The result is greater efficiency & comfort. Pressure rated at 3600 PSI (24.8 MPa).

Refer to the retaining nut chart on this page to select the proper nut size to adapt to your airless gun.

Angle Adapter	Product No. 0509907
---------------	---------------------



EXTENSION POLE COUPLING

Allows you to connect different length extruded poles together to create different lengths for any application. (Do not exceed 12')

Extension Pole Coupling	Product No. 310-062
-------------------------	---------------------



6' OUTRIGGER

- Convert existing gun to 6' (2m) pole gun & back in seconds.
- Allows you to increase production & profits.
- Constructed of lightweight & rigid aluminum to reduce arm fatigue.
- Large, gun installation holder & knob.
- No additional hoses or fittings required.
- Adapts to all Titan airless spray guns & most manufacturers airless spray guns.

6' Outrigger

Product No. 757-920

LX-75 POLE GUNS

- All metal construction.
- Full length needle ensures positive shut-off at tip.
- Pressure rated at 3600 PSI (24.8 MPa).
- Reach those high, out-of-the-way places that normally require the use of a ladder or scaffolding.
- Gun swivel
- In-handle filter.
- Ergonomic design

4' Pole Gun

Product No. 550-495

Repair Kit No.

Product No. 550-487



LX-70 IN-LINE GUN

- All metal construction.
- “In-line” design is a natural extension to any pole.
- In-handle filter.
- Swivel reduces hose kinks and ensures effortless control.
- Pressure rate at 3600 psi (24.8 MPa).

LX-70 Gun

Product No. 550-475

Repair Kit

Product No. 550-487



i-REMOTE UNIVERSAL REMOTE CONTROL

- The first in the industry.
- Operates over 100 feet away from unit — through walls, trees and other obstacles.
- Increase or decrease the pressure — without climbing down off the ladder or scaffold.
- Ability to turn sprayer ON and OFF; eliminates sprayer “run away” when you run out of paint by stopping sprayer quickly— extending your piston and packing life.
- Universal remote control operates most manufactures electronic pressure controlled sprayers.
- Works on i, ix & Advantage series sprayers as well as 440 Impact. (Except Advantage 400)

i-remote & Receiver

Product No. 800-690

Remote Only

Product No. 800-691

Receiver Only

Product No. 800-692



ROLLERS

The speed of a sprayer and the control of a roller in one package

Every painting contractor has worked with a roller. It's an efficient and controlled way to apply paint. But it's also much slower than a sprayer – up to 40% of your labor time is spent charging the roller with paint. What if you could combine the two? TITAN has the answer.

INNER FEED ROLLING



INNER FEED PRESSURE ROLLER

Instead of dipping the roller into the paint, why not feed the paint into the roller? You get the best of both application worlds, increasing the speed and efficiency of your work – saving time and making a lot more money. It's much easier than you think and TITAN has the equipment that lets you get the job done right.

- Up to 40% faster than standard roller application
- The roller never leaves the surface
- Easy to use and easy to clean up

9" (22.7 cm) Roller Head	Product No. 310-934
Inner Feed Repair Kit	Product No. 310-905



INNER FEED PRESSURE KIT INCLUDES:

- 3' Pole.
- 90° Angle Adapter.
- Inner Feed Roller Head Assembly.
- 1/2" x 9" High Quality Inner Feed Roller Cover.
- Fits Onto Any Airless Gun.

9" Pressure Roller Kit	Product No. 310-150
------------------------	---------------------

TELESCOPING PRESSURE ROLLER (LOW PRESSURE)

- For high production paint applications where spraying is impractical.
- Patented auger head design evenly distributes coating for a professional finish every time.
- Comes with light weight aluminum adjustable pole with a working pressure of 1200 PSI (8.3 MPa).
- The exclusive telescoping roller design has a large collar that allows you to quickly adjust the length of the pole from 3'-6' (.9 m - 1.8 m).
- Also includes Titan's LX-70 In-Line Gun which features an all metal design & a filter in the handle for a superior finish & extended life.

Telescoping Pole Only	Product No. 310-938
-----------------------	---------------------

LX-70 Telescoping Roller Kit with

9" (23 cm) Inner Feed Roller Head 1/2"

(1.3 cm) nap

Product No. 310-950

(Caution! Do not use for spray applications.)

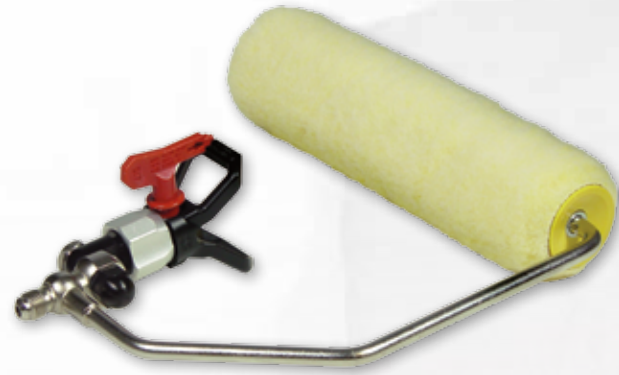
SPRAY ROLLER

On rough, porous surfaces like stucco and concrete block many contractors apply the coating with a sprayer and then back-roll it into the surface. It can be messy (lots of overspray) and time consuming (you need two workers to do it). Now imagine what it would be like to spray AND roll at the same time. You save time and make money. That's what TITAN is all about.

- Ideal for very porous and rough surfaces
- Spray on the down-stroke and roll on the upstroke
- Saves both time and money

9" Spray Roller Head Assembly

Product No. 310-049



3-IN-1 SPRAY/ROLL APPLICATION KIT

The Spray/Roll Application Kit offers the proper airless spray painting tools for just about every possible painting condition. It's the first complete application kit created for professionals. By selecting the proper combination of tools, the professional painter can choose to either spray, spray & back-roll or simply roll.

Includes:

- LX-70 In-Line Gun.
- 9" (23 cm) Spray Roller Head Assembly.
- 3' (9 m) Extruded Pole.
- 9" (23 cm) Pressure Roller Head Assembly.
- Swivel Head Assembly.

Application Kit

Product No. 310-110



ROLLER HEAD REPLACEMENT COVERS

SPRAY ROLLER REPLACEMENT COVERS

Size	Nap Thickness	Product No.
9" (23 cm)	1/2" (1.2 cm)	311-050-9
9" (23 cm)	3/4" (1.9 cm)	311-075-9
9" (23 cm)	1-1/4" (3.1 cm)	311-125-9

INNER FEED PRESSURE ROLLER REPLACEMENT COVERS

Size	Nap Thickness	Product No.
9" (23 cm)	3/8" (.81 cm)	312-037-9
9" (23 cm)	1/2" (1.2 cm)	312-050-9
9" (23 cm)	3/4" (1.9 cm)	312-075-9



HOSES

The right equipment for the right job

Just a commodity? Think again. A hose that fails or bursts can cost you time, paint and worse. There is a lot of pressure in that hose and you need reliability. You need TITAN – the industry leader in top-shelf paint hoses and flexible whips.

- Solid urethane construction designed to withstand time and pressure
- Easy to coil and uncoil
- Wide variety of diameters and lengths

EXTENDED LENGTH

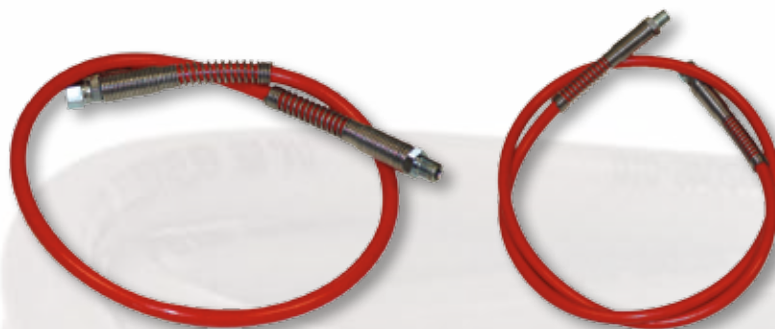


HIGH QUALITY AIRLESS HOSE



Part No.	I.D.	Length		Maximum Working Pressure		End Connection
		Feet	Meters	PSI	MPa	
0291007	3/16"	25	7.6	3300	22.8	1/4" NPSM (FBE)
0291008	3/16"	50	15.2	3300	22.8	1/4" NPSM (FBE)
316-513	1/4"	25	7.6	3300	22.8	1/4" NPSM (FBE)
316-505	1/4"	50	15.2	3300	22.8	1/4" NPSM (FBE)
0286498	1/4"	50	15.2	3600	24.8	1/4" NPSM (FBE)
250-114*	1/4"	50	15.2	4500	31	1/4" NPSM (FBE)
250-614*	1/4"	25	15.2	7400	51	1/4" NPSM (FBE)
0508342	3/8"	25	7.6	3300	22.8	1/4" NPSM (FBE)
690-375-50	3/8"	50	15.2	3300	22.8	3/8" NPSM (FBE)
0286499	3/8"	50	15.2	3600	24.8	3/8" NPSM (FBE)
250-538*	3/8"	50	15.2	5400	37	3/8" NPSM (FBE)
225-112*	1/2"	25	7.6	3000	20.7	1/2" NPSM (FBE)
250-112*	1/2"	50	15.2	3000	20.7	1/2" NPSM (FBE)
250-512*	1/2"	50	15.2	5100	35.2	1/2" NPSM (FBE)
250-638*	3/8"	50	15.2	7400	51	3/8" NPSM (FBE)

AIRLESS FLUID HOSE WHIPS



5' Whip Hose

9' Whip Hose

Part No.	I.D.	Length		Maximum Working Pressure		End Connection
		Feet	Meters	PSI	MPa	
550-240	3/16"	3	0.9	3300	22.8	1/4" NPSM (F/M)
316-506	3/16"	5	1.5	3300	22.8	1/4" NPSM (F/M)
550-222	3/16"	9	2.7	3300	22.8	1/4" NPSM (F/M)
550-221	3/16"	15	4.5	3300	22.8	1/4" NPSM (F/M)
203-514*	1/4"	3	0.9	4500	31.0	1/4" NPSM (FBE)
550-227	1/4"	6	1.8	3300	22.8	1/4" NPSM (F/M)
316-533*	1/4"	6	1.8	3300	22.8	1/4" NPSM (FBE)

*Textile Braid - Spring guards at both ends
 NPT - National Pipe Tapered Thread
 NPSM - National Pipe Straight Mechanical Thread

FBE - Female Both Ends
 MBE - Male Both Ends
 F/M - 1 Female / 1 Male Connection

HOSE SHIELD

Protect your airless hose from paint and abrasion damage with a durable 4 mil poly hose cover. Comes in 1100 foot lengths with perforation every 50 feet to fit any length of hose. Works with 1/4" and 3/8" hoses

Hose Cover

Product No. 0521424

*Hose not included



REEL EZ HOSE REELS

- The Reel-EZ virtually eliminates hose hassles & increases your production. The Reel-EZ 16 mounts to the frame of all Titan cart style paint sprayers with a heavy duty universal mounting bracket. The Reel-EZ 10 mounts to the frame of all Titan skid style paint sprayers such as the 440. Both the Reel-EZ 16 & Reel-EZ 10 mount to most major manufacturer's paint sprayers with similar designs.
- The Reel-EZ 16 can hold up to 100' (30.5 m) of 1/4" airless hose & the Reel-EZ 10 can hold up to 50' (15.2 m) of 1/4" airless hose. Both are rated at 3600 psi (25 MPa).

Reel-EZ 16" Cart-Mount

Product No. 769-100

Reel-EZ 10" Skid-Mount

Product No. 769-200



HIGH PRESSURE FLUID GAUGE KIT

Includes: 5000 PSI (34.5 MPa) high pressure fluid gauge attached to a T-Fitting with one 1/4" (M) (.63cm) fitting & one 1/4" (F) (.63cm) fitting.

Fluid Gauge Kit

Product No. 730-397

Fluid Gauge Only

Product No. 730-394



HIGH PRESSURE SWIVELS

- Pressure rated at 5000 PSI (34.5 MPa).

Gun-To-Hose/Hose-To-Pump

1/4" (.63 cm) NPS (F) x 1/4" (.63 cm) NPS (M)

Product No. 0509985

Hose-To-Hose

1/4" (.63 cm) NPS(M) x 1/4" (.63 cm) NPS(M)

Product No. 0502135



0509985



0502135

LIQUIDS

No matter what the sprayer – hydraulic, gear driven, gas-powered or electric – if you want a long service life you will need to care for it with the same attention you care for your own car or truck. That means changing the oil, lubricating the piston, cleaning the unit, the gun and the tip. TITAN has all the products you need to keep your accessories and equipment clean and functioning in top condition.

- Specially formulated for all sprayers, accessories and equipment
- Maintain clean and efficient operation for better profit
- Prolong the life of your investment

EXTENDED LENGTH



CLEAN UP/STORAGE



LS-10 LIQUID SHIELD PLUS™

- Cleans & protects your spray system against rust & corrosion.
- Extends the life of your pump.
- With anti-freeze protection.

Size	Product No.
1 qt. bottle	314-482
4 oz. bottle	314-483
1 gal. bottle	0521418



PUMPSHIELD™

Cover your sprayer to prevent paint overspray from sticking to it. Keeps your sprayer looking new

Size	Product No.
12 oz. bottle	0297055



TIP CLEAN™

- Hour-glass design allows easy cleaning of all airless tips and safe storage.
- Cleaning fluid removes contamination and paint residue, ensuring best spraying results.

Size	Product No.
7 oz. / 200 ml	314-207



PISTON LUBE™

- Specially formulated to prevent materials from adhering to the piston rod.
- Suitable for use with most airless piston pumps.

Size	Product No.
8 oz. bottle	314-480
4 oz. bottle	314-481
1 qt. bottle	700-926



PAINT MATE™

Water-based coating additive that significantly improves atomization with HVLP sprayers without compromising the integrity of the coating.

Size	Product No.
1 qt. bottle	0508071
1qt. bottle (case of 6)	0508069



COOLFLO™

- Hydraulic Fluid for PowrTwin & Hydra sprayers.

Size	Product No.
1 gallon	430-361
1 qt. bottle	430-362
1 qt. bottle (case of 12)	430-363



GREASE

- Specially designed for gear boxes.

Size	Product No.
14 oz. Can	314-171
6 lb. Can	9870307



PART RENU™

- Safely removes paint from spray guns and sprayer accessories
- Non-flammable water based cleaner is environmentally safe, odor free – will not burn skin.
- Easy to use strainer included in the starter kit.
- Easily washes off with water

Size	Product No.
1 gallon Part Renu	0521423
5 gallon Starter Kit	0521010



FITTINGS

Spraying is more than just hooking up a hose. Sometimes the situation calls for extending hose length or altering the angle of the hose connected to the sprayer. That's when you need TITAN manifolds and fittings.

- We have a fitting for every job
- Manufactured from quality stainless steel
- Engineered for durability and long life



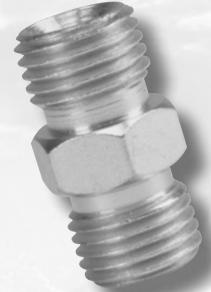
90° STREET ELBOWS

Description	Product No.
3/8" NPT(F) X 3/8" NPT(M)	818-002
1/2" NPT(F) X 1/2" NPT(M)	818-003
3/4" NPT(F) X 3/4" NPT(M)	818-010



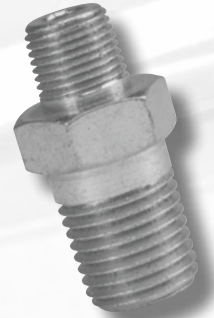
HOSE TO HOSE COUPLINGS

Description	Product No.
1/4" NPS(M) X 1/4" NPS(M)	490-012
1/4" NPT(M) X 3/8" NPS(M)	812-003
3/8" NPT(M) X 3/8" NPS(M)	490-014
1/2" NPT(M) X 1/2" NPS(M)	449-621



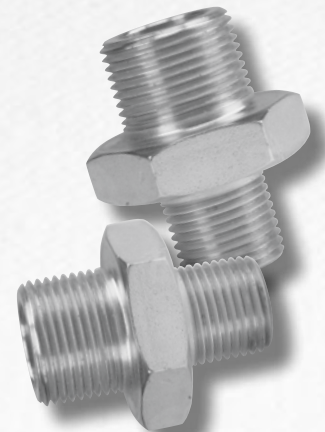
MANIFOLD TO MANIFOLD COUPLINGS

Description	Product No.
1/4" NPT(M) X 1/4" NPT(M)	490-002
1/4" NPT(M) X 3/8" NPT(M)	490-006
3/8" NPT(M) X 3/8" NPT(M)	814-004
3/8" NPT(M) X 1/2" NPT(M)	814-005
1/2" NPT(M) X 1/2" NPT(M)	814-006
1/2" NPT(M) X 3/4" NPT(M)	101-201
3/4" NPT(M) X 3/4" NPT(M)	814-007



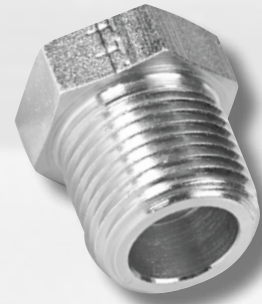
MANIFOLD TO HOSE COUPLINGS

Description	Product No.
1/8" NPT(M) X 1/4" NPS(M)	490-001
1/4" NPT(M) X 1/4" NPS(M)	227-006
1/4" NPT(M) X 3/8" NPS(M)	804-555
1/4" NPT(M) X 1/2" NPS(M)	814-003
3/8" NPT(M) X 1/4" NPS(M)	812-003
3/8" NPT(M) X 3/8" NPS(M)	808-555
3/8" NPT(M) X 1/2" NPS(M)	815-005
1/2" NPT(M) X 1/2" NPS(M)	228-002
1/2" NPT(M) X 3/4" NPS(M)	874-001
3/4" NPT(M) X 1/2" NPS(M)	814-555



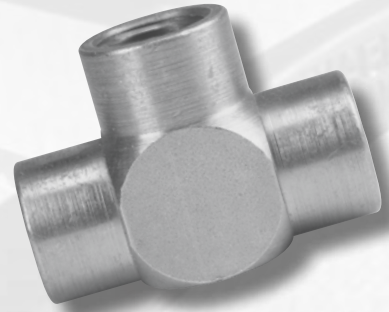
REDUCER BUSHINGS

Description	Product No.
3/8" NPT(M) X 1/4" NPT(F)	817-001
1/2" NPT(M) X 1/4" NPT(F)	929-061
1/2" NPT(M) X 3/8" NPT(F)	541-009
3/4" NPT(M) X 1/4" NPT(F)	929-062
1" NPT(M) X 3/4" NPT(F)	929-076
1-1/4" NPT(M) X 1" NPT(F)	929-077



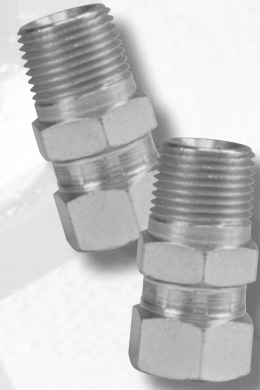
PIPE TEES

Description	Product No.
1/4" NPT (F)	970-023
3/8" NPT (F)	817-002
1/2" NPT (F)	817-003
3/4" NPT (F)	817-004



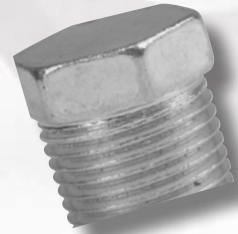
SWIVEL UNION

Description	Product No.
1/4" NPS(F) X 1/4" NPT(M)	490-005
3/8" NPS(F) X 1/4" NPT(M)	490-042
1/4" NPS(F) X 3/8" NPT(M)	490-032
3/8" NPS(F) X 3/8" NPT(M)	490-043
1/2" NPS(F) X 1/2" NPT(M)	200-555
3/4" NPS(F) X 3/4" NPT(M)	138-037
1" NPS(F) X 1" NPT(M)	200-556



PIPE PLUGS

Description	Product No.
1/8" NPT (M)	227-030
1/4" NPT (M)	227-027
3/8" NPT (M)	227-033
1/2" NPT (M)	210-023
3/4" NPT (M)	210-038



MISCELLANEOUS

STEAMER



DT STEAMER

A powerful, commercial steamer with minimal service and maximum ROI.

The DT Steamer turns a quick investment in to a fast return. With the Dual Tank technology, you are able to be working in under 5 minutes. With the large and small steam plates included, you can cover large areas or small areas between trim and doors.

Max. Capacity tank:	1.5 gallons
Power:	1500 watts
Hose / Cord:	16 ft electrical cord / 16 ft hose
Steam Time:	3 hours
Product No:	0282009



PUMP RUNNER

The PumpRunner is the ideal accessory for your piston pump. It prevents the inlet valve from drying out, ensures clean transport and reduces clean up time. Works on most direct immersion sprayers.

Pump Runner	Product No. 0286008
-------------	---------------------

840 Sprayer not included

Pump Runner



TEXTURE HOPPER GUN

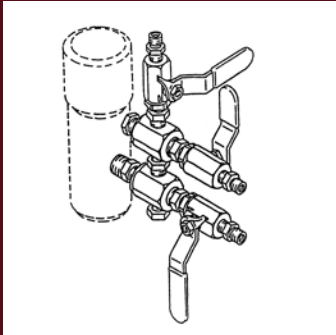
- 1-gallon adjustable hopper can be configured for spraying without the use of adapters—spray walls or ceilings
- Powered by air supply from CAPSPRAY Turbine Sprayer CS75, CS95, CS105, or CS115 - sold separately
- Comfort arm rest gets the job done with less fatigue
- Includes 3 nozzles for popcorn, knockdown or orange peel texture finishes
- 3-point stand allows for an easy, spill-free fill and refill
- Lock-n-Go Technology for quick hopper removal and easy clean-up



Capspray PowerTex Gun

0524039

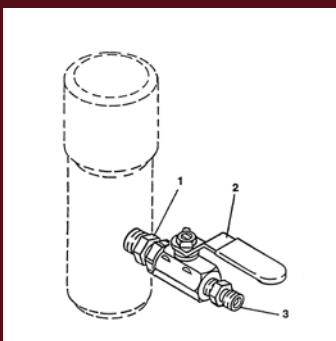
MODULAR MANIFOLDS



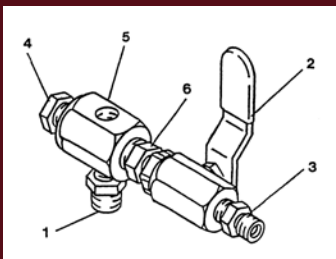
3-GUN MANIFOLD ASSEMBLY



6-GUN MANIFOLD ASSEMBLY



1-GUN ADD-ON KIT



ADD-A-GUN KIT

GUN MANIFOLD ASSEMBLIES

1/4" MULTIPLE GUN MANIFOLD ASSEMBLIES*

Part Number	Desc.	975-212	975-213	975-214
		2-Gun 1/4"	3-Gun 1/4"	4-Gun 1/4"
975-111	1-Gun Add on 1/4"	1	1	1
975-200	Add-A-Gun Kit 1/4"	1	1	3

*Hose Connection is 1/4" NPSM(M)

3/8" MULTIPLE GUN MANIFOLD ASSEMBLIES*

Part Number	Desc.	975-312	975-313	975-314
		2-Gun 3/8"	3-Gun 3/8"	4-Gun 3/8"
975-311	1-Gun Add on 3/8"	1	1	1
975-300	Add-A-Gun Kit 3/8"	1	1	3

*Hose Connection is 3/8" NPSM(M)

GUN ADD ON KITS

Part No.	Desc.	975-111	975-311	975-200	975-300
		1-Gun Add-On 1/4"	1-Gun Add-On 3/8"	Add-A-Gun 1/4"	Add-A-Gun 3/8"
814-002	Nipple, Hex	1		1	
814-004	Nipple, Hex		1		1
940-553	Valve, Ball	1		1	
941-555	Valve, Ball		1		1
227-006	Nipple, Hex	1		1	
808-555	Nipple, Hex		1		1
227-033	Plug, Pipe			1	1
970-100	Block, Manifold		1	1	
814-004	Nipple, Hex		1	1	



THE BEST & LONGEST WARRANTY IN THE INDUSTRY

Not only do we deliver high quality sprayers, we are proud to back them up with the best and longest warranty in the industry.

Titan sprayers are built to last. We are so confident that our sprayers will hold up to the most difficult jobs that we offer the best and longest warranty in the industry.

4 YEAR MANUFACTURER'S DEFECT

We pledge that our sprayers are free from defects in materials and workmanship. This excludes normal wear items and consumables such as filters, piston, packings, tips, etc.

LIFETIME DURALIFE BRUSHLESS HE AND PMDC BRUSHLESS MOTOR WARRANTY

If the motor fails for any reason (including wear) for as long as you own the sprayer, we will replace the motor at no cost to you.

LIMITED LIFETIME DCX MOTOR WARRANTY

If the motor fails from normal usage for as long as you own the sprayer, we will replace the motor at no cost to you.

GAS ENGINE WARRANTY

5 year Subaru®, 3 year Honda® and 2 years all others.

2 YEAR TURBINE WARRANTY

LIFETIME DRIVE TRAIN WARRANTY

If the drive train fails from normal usage for as long as you own the sprayer, we will replace the drive train at no cost to you.

35-DAY SATISFACTION GUARANTEE

If for any reason the sprayer does not perform up to your expectations within 35 days, the sprayer can be exchanged for the identical model or full credit towards the purchase of a Titan sprayer of larger size and value.

EXPRESS PARTS PROGRAM

- Over 900 Authorized Service Centers nationwide
- The most common repair parts are guaranteed to be in stock 100% of the time
- If for any reason your preferred Authorized Service Center is out of stock, free 2nd day air is available when ordered by 3:00 pm (EST)

For more information about the industry's leading warranty, please call the Titan® Technical Service Department at 1-800-526-5362.

WEARGUARD™ CONVENIENCE PROGRAM

Get up to 80% off a spare fluid section or choose to get a free repacking kit

Titan™ 400 **\$109^{95*}**

Small **\$149^{95*}**

Impact: 440, 540, 640

Impact Models Include Pusher Valve, Prime Spray Valve, and Manifold Filter Assembly

Medium **\$199^{95*}**

Advantage: 1100 **Impact:** 740, 840, 1140

GPX: 85, 130, 165 **PowLiner:** 2850

Large **\$299^{95*}**

PowTwin: 4900 Plus, 6900 Plus, 8900 Plus, 12000 Plus, 6900 Plus DI, 12000 Plus DI **PowLiner:** 4950, 6950, 8950

PowrTex: 1200SF **GPX:** 220

Extra Large **\$599^{95*}**

PowrCoat: 730, 745, 940, 960, 975 **Hydra:** Pro IV

*Tax not included



Plug into TitanPowerHouse.com

All information contained in this brochure is based on the latest information available at the time of printing. Titan reserves the right to make changes at any time, without notice.

Visit us on the web at: www.titantool.com
Call Tech Services at 1-800-526-5362 for complete warranty information.

Due to continuous innovation, specifications may progressively change. Contact one of our dependable sales reps or call our dedicated customer service team for more information.

Titan Tool

1770 Fernbrook Lane
Minneapolis, MN 55447
1-800-526-5362
Fax 1-800-528-4826