



Binks® SG-2 Plus™ ROTARY 2 QT. PRESSURE CUP Model No. 80-651—Rotary Agitator

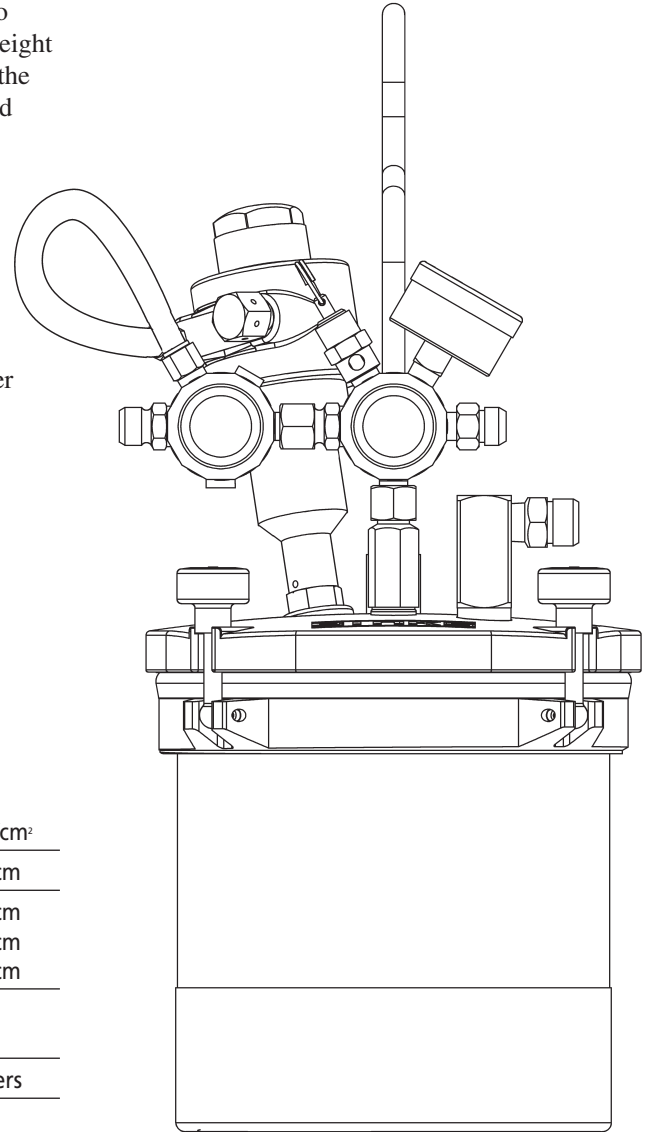
INTRODUCTION

Binks SG-2™ Plus Rotary 2 Qt. Pressure Cup is ideal for component spraying and industrial applications where small batch production spraying is required. The 2 qt. capacity is sufficient to complete large spray jobs without refilling the cup. Its lightweight and rugged construction is excellent for portability, allowing the operator to make fluid and air control adjustments quickly and efficiently at the spray station.

The internal construction is designed for waterborne and solvent base materials.

Other features include:

- Stainless steel pick-up tube, fluid fittings and removable plastic liner makes it corrosion resistant.
- “Wide-mouth” opening allows easy cleaning, plastic liner removal and quick color change.
- Positive grip carrying handle for operator comfort.
- Wide stainless steel base for stability and corrosion resistance.
- 0-50 psig fluid pressure range.
- Optional 0-10 psi pressure kit.
- Silverstone® coated on interior and exterior of lid.
- Rotary agitator for metallics and paints requiring continuous agitation.
- Mixed flow impeller for superior agitation with minimal vortex.



SPECIFICATIONS

MAX. WORKING PRESSURE	50 psig	3.5 kg/cm ²
OVERALL HEIGHT	15 11/16 in.	39.88 cm
BASE DIAMETER	6 in.	15.24 cm
DIA. ACROSS CLOSED CLAMPS.....	8 1/16 in.	20.47 cm
DIA. ACROSS OPEN CLAMPS	8 1/16 in.	20.47 cm
AIR INLET & OUTLET CONNECTION SIZE ...	1/4 NPS (m)	--
FLUID OUTLET CONNECTION SIZE.....	3/8 NPS (m)	--
FLUID CAPACITY.....	2 Qts. (U.S.)	1.9 Liters
WEIGHT	7lb.5oz.	3.3 kg.
AGITATOR AIR CONSUMPTION	2.5 cfm @ 40 psi	7.5 cfm @ 100 psi

⚠ WARNING

All air and fluid pressure in the system must be relieved before servicing the cup and before cup is filled or cleaned. Attempting to service the cup while pressurized could result in damage to components or personal injury.

In this part sheet, the words **WARNING**, **CAUTION** and **NOTE** are used to emphasize important safety information as follows:

⚠ WARNING
 Hazards or unsafe practices which could result in severe personal injury, death or substantial property damage.

⚠ CAUTION
 Hazards or unsafe practices which could result in minor personal injury, product or property damage.

NOTE
 Important installation, operation or maintenance information.

⚠ WARNING

Read the following warnings before using this equipment.



READ THE MANUAL
 Before operating finishing equipment, read and understand all safety, operation and maintenance information provided in the operation manual.



WEAR SAFETY GLASSES
 Failure to wear safety glasses with side shields could result in serious eye injury or blindness.



DE-ENERGIZE, DEPRESSURIZE, DISCONNECT AND LOCK OUT ALL POWER SOURCES DURING MAINTENANCE
 Failure to De-energize, disconnect and lock out all power supplies before performing equipment maintenance could cause serious injury or death.



OPERATOR TRAINING
 All personnel must be trained before operating finishing equipment.



EQUIPMENT MISUSE HAZARD
 Equipment misuse can cause the equipment to rupture, malfunction, or start unexpectedly and result in serious injury.



KEEP EQUIPMENT GUARDS IN PLACE
 Do not operate the equipment if the safety devices have been removed.



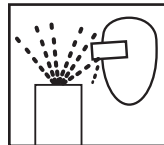
HIGH PRESSURE CONSIDERATION
 High pressure can cause serious injury. Relieve all pressure before servicing. Spray from the spray gun, hose leaks, or ruptured components can inject fluid into your body and cause extremely serious injury.



PRESSURE RELIEF PROCEDURE
 Always follow the pressure relief procedure in the equipment instruction manual.



ELECTRIC SHOCK/GROUNDING
 Improper grounding or sparks can cause a hazardous condition and result in fire, explosion or electric shock and other serious injury.



PROJECTILE HAZARD
 You may be injured by venting liquids or gases that are released under pressure, or flying debris.



INSPECT THE EQUIPMENT DAILY
 Inspect the equipment for worn or broken parts on a daily basis. Do not operate the equipment if you are uncertain about its condition.



NEVER MODIFY THE EQUIPMENT
 Do not modify the equipment unless the manufacturer provides written approval.



FIRE AND EXPLOSION HAZARD
 Improper equipment grounding, poor ventilation, open flame or sparks can cause hazardous conditions and result in fire or explosion and serious injury.



KNOW WHERE AND HOW TO SHUT OFF THE EQUIPMENT IN CASE OF AN EMERGENCY



STATIC CHARGE
 Fluid may develop a static charge that must be dissipated through proper grounding of the equipment, objects to be sprayed and all other electrically conductive objects in the dispensing area. Improper grounding or sparks can cause a hazardous condition and result in fire, explosion or electric shock and other serious injury.



PROP 65 WARNING
 WARNING: This product contains chemicals known to the State of California to cause cancer and birth defects or other reproductive harm.

IT IS THE RESPONSIBILITY OF THE EMPLOYER TO PROVIDE THIS INFORMATION TO THE OPERATOR OF THE EQUIPMENT.

FOR FURTHER SAFETY INFORMATION REGARDING BINKS AND DEVILBISS EQUIPMENT,
 SEE THE GENERAL EQUIPMENT SAFETY BOOKLET (77-5300).

SETUP AND OPERATION

Refer to "TYPICAL INSTALLATION" drawing below

Set up the SG-2 Plus™ Rotary with the CONVENTIONAL or HVLP gun along with at least 5 ft. of air and fluid hose.

Attach air hose from extractor to air inlet on handle of steady-grip assembly. Pour paint into canister with liner. Re-attach lid to canister and firmly tighten four knobs over canister lid. Set air pressure from air regulator mounted on extractor and fluid pressure by adjusting fluid pressure adjustment knob on cup handle. Open air valve on top of handle to start agitator.

⚠ CAUTION

Do not exceed 100 PSIG input air pressure into the cup. Excessive pressure could damage components.

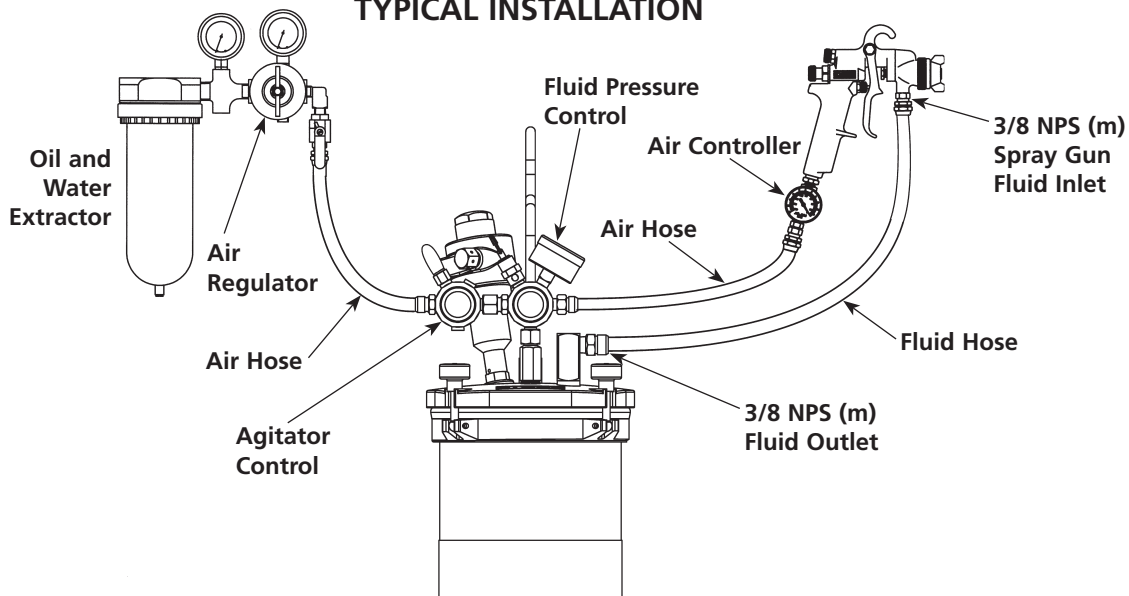
⚠ WARNING

Chlorinated solvents and aluminum are incompatible and will cause an adverse chemical reaction, possibly resulting in bodily injury. With the SG2 pressure cup, use chlorinated solvents only when using plastic liner (80-355).

⚠ CAUTION

Before refilling canister with paint, shut off air supply to the cup and release pressure from canister by rotating pressure relief knob counterclockwise.

TYPICAL INSTALLATION



MAINTAINING YOUR 80-651 ROTARY PRESSURE CUP

DAILY: Add a couple drops of air motor oil to air motor inlet to ensure smooth operation. DO NOT ADD OIL TO MAIN AIR INLET ON HANDLE.

AS NEEDED: Clean and lubricate regulator, check valve and pop valve.

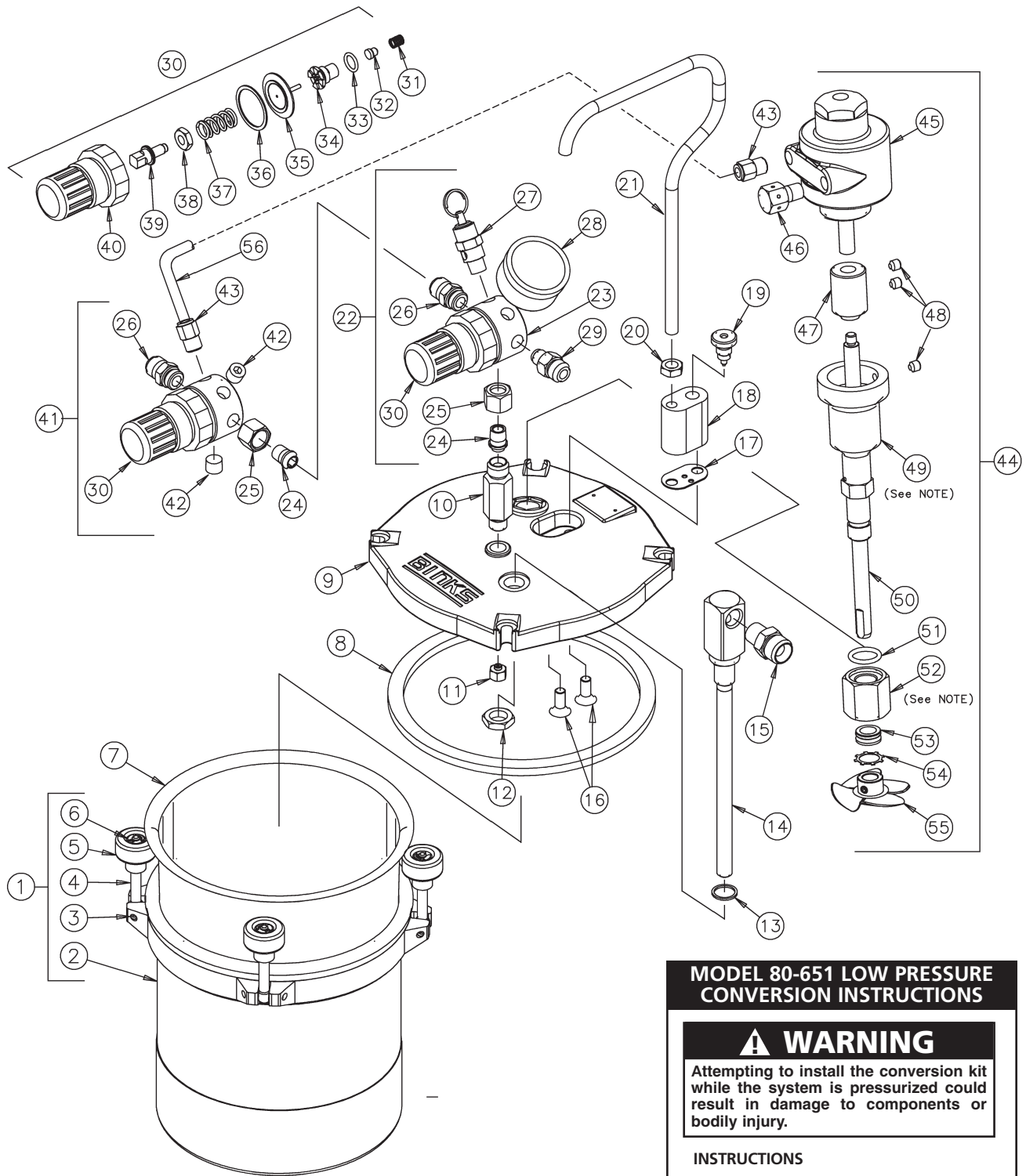
⚠ WARNING

Disconnect air source from cup and bleed off all pressure before servicing the cup or its components. Failure to do so could result in injury.

NOTE

Items 49 and 52 have left hand threads.

Binks MODEL 80-651 SG-2 PLUS™ PRESSURE CUP WITH ROTARY AGITATOR



NOTE
Items 49 and 52 have left hand threads.

**MODEL 80-651 LOW PRESSURE
CONVERSION INSTRUCTIONS**

⚠ WARNING

Attempting to install the conversion kit while the system is pressurized could result in damage to components or bodily injury.

INSTRUCTIONS

1. Depressurize and shut off the entire system before installing the conversion kit.
2. Remove regulator from cup.
3. Replace gauge (28) with gauge provided in the conversion kit.
4. Replace the regulating spring (37).
5. Inspect all other internal components of the regulator and replace with the new items from the conversion kit as needed and reassemble the regulator.
6. Reassemble the regulator to the cup.

Binks MODEL 80-651 SG-2 PLUS™ PRESSURE CUP WITH ROTARY AGITATOR

PARTS LIST

(When ordering, please specify Part No.)

ITEM NO.	PART NO.	DESCRIPTION	QTY.	ITEM NO.	PART NO.	DESCRIPTION	QTY.
1	80-375	2 QT CANISTER ASM	1	30	85-438* ◊	REGULATOR KIT, 60 PSI	2
2	80-376+	2 QT CANISTER SUB-ASM	1	31	----- ▲	VALVE SPRING	1
3	20-4870+○	SPIROL PIN	4	32	----- ▲	VALVE, TEF.....	1
4	80-381+○	CANISTER KNOB SWIVEL	4	33	----- ▲	O-RING	1
5	80-380+○	CANISTER KNOB	4	34	----- ▲	VALVE SEAT	1
6	80-382+○	RETAINING RING	4	35	----- ▲	DIAPHRAGM.....	1
7	80-355	DISPOSABLE LINER	1	36	----- ▲	VALVE SPRING	1
8	80-392*	LID GASKET	1	37	----- ▲	REGULATING SPRING	1
9	80-602	COVER MACHINING	1	38	----- ▲	NUT	1
10	80-606	CHECK VALVE ASM	1	39	----- ▲	STEM	1
11	80-610	DIFFUSER.....	1	40	----- ▲	BONNET	1
12	80-389	FLUID TUBE NUT	1	41	85-448	REGULATOR ASM, Agitator control	1
13	80-388*	FLUID TUBE SEAL	1	42	20-2287-1	PLUG, 1/8 NPT.....	2
14	80-613	FLUID TUBE ASM.....	1	43	54-4945	PUSH-LOK CONNECTION	2
15	83-2484	DM NIPPLE, 1/4 NPT X 3/8 NPS.....	1	44	80-452	ROTARY AGITATOR ASM	1
16	20-6582	SCREW.....	2	45	37-478	AIR MOTOR	1
17	80-373*	HANDLE GASKET.....	1	46	41-646	MUFFLER.....	1
18	80-604	MANIFOLD.....	1	47	80-459	SHAFT COUPLING	1
19	80-12	RELIEF VALVE.....	1	48	20-2141	SET SCREW, HEX HEAD	3
20	20-353-1	JAM NUT, 5/16-18	1	49	80-455	SHAFT HOUSING	1
21	80-605	HANDLE	1	50	80-457	SHAFT.....	1
22	85-450	REGULATOR ASM (60# gauge)	1	51	20-6754	O-RING	1
23	85-436	REGULATOR BODY.....	2	52	80-454	SEAL RETAINER NUT	1
24	72-104	TAIL PIECE	2	53	80-458	ROTARY SEAL	1
25	72-93	SWIVEL NUT, 1/4 NPS	2	54	20-6756	RETAINING RING	1
26	54-308	AIR CONNECTION.....	2	55	80-453	IMPELLER	1
27	85-243	SAFETY VALVE*	1	56	54-3929-5	TUBE 6" (Quantity Pack)	1
28	59-369	GAUGE, 60 PSI	1				
29	71-28	DM NIPPLE, 1/8 NPT X 1/4 NPS	1				

* Part of 80-618 Pressure Cup Repair Kit.

+ Part of 80-375 2Qt. Canister Assy.

○ Part of 80-390 Knob Replacement Kit. (1 ea. knob, pin, spring, and retaining ring.)

◊ Used in 85-448 and 85-450 Regulator Assemblies.

▲ Part of 85-438 Regulator Kit.

ACCESSORIES

(Not furnished, please order separately.)

PART NO.	DESCRIPTION	QTY.
80-356	CANISTER LINER QTY. PACK OF 80-355	12/pk.
73-125	AIR CONTROLLER (for atomizing air)	1
HAV-500	AIR ADJUSTING VALVE.....	1
HAV-501	AIR ADJUSTING VALVE W/GAUGE	1

6-196 AIR MOTOR REPAIR KIT

PART NO.	DESCRIPTION	QTY.
37-703	VANE	1
37-525	BEARING	1
37-526	SHAFT SEAL	1
37-528	END PLATE GASKET.....	1
37-530	END CAP GASKET	1

80-463 AGITATOR REPAIR KIT

PART NO.	DESCRIPTION	QTY.
80-458	ROTARY SEAL	1
20-6756	RETAINING RING.....	1
20-6754	O-RING	1

80-618 PRESSURE CUP REPAIR KIT

(HIGH PRESSURE – 50# SPRING)

PART NO.	DESCRIPTION	QTY.
85-438	REGULATOR KIT, (50# SPRING).....	1
80-373	HANDLE GASKET.....	1
80-388	FLUID TUBE SEAL.....	2
80-392	LID GASKET.....	1
85-243	SAFETY VALVE.....	1

80-620 LOW PRESSURE CONVERSION KIT

PART NO.	DESCRIPTION	QTY.
59-299	GAUGE, (15 PSI)	1
85-437	REGULATOR KIT, (15# SPRING).....	1

NOTES

NOTES

WARRANTY

This product is covered by Binks' 1 Year Limited Warranty.

Binks Sales and Service: www.binks.com

BINKS

U.S.A./Canada Customer Service
195 Internationale Blvd.
Glendale Heights, IL 60139
630-237-5000

Toll Free Customer Service
and Technical Support
800-992-4657

Toll Free Fax
888-246-5732

77-2842R-5 Revisions: Trademark updates,
(P8) Updated contact information.