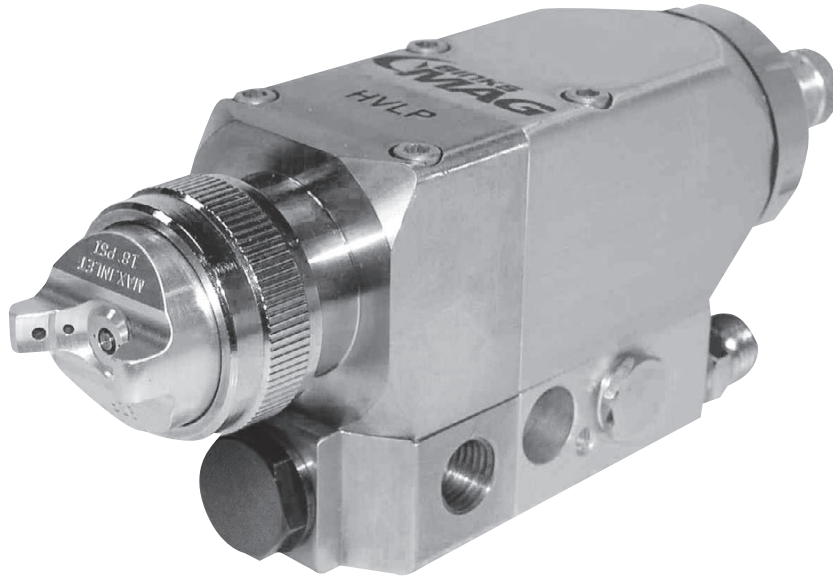


BINKS®

MAG HVLP AUTOMATIC AIRSPRAY GUN

CE  II 2 G X



The following instructions provide the necessary information for the proper operation and preventive maintenance of the Binks MAG HVLP Manifold Mounted Airspray Gun. Please read and understand all information in this document in order to get the maximum performance from your new MAG HVLP airspray gun.

The automatic MAG HVLP gun is a conventional style airspray gun with special nozzle and modifications that allow it to operate at high transfer efficiencies in compliance with the “California South Coast Air Quality Management District” regulations as a “high volume, low pressure” airspray gun.

High pressure, low volume airflow is converted to high volume, low pressure within the gun body. Special air and fluid nozzle enable the gun to atomize fluid at low air pressure and velocities, creating the “soft spray” effect for high transfer efficiencies.

CAUTION

Before removing any components from spray gun, shut off air and material pressure.

NOTE

IMPORTANT REGULATORY NOTE regarding the use of this product appears on page 6.

If you have any questions or do not understand the information presented, call your nearest service representative.

SPECIFICATIONS:

| | |
|--|--|
| Max. Air Pressure: | 100 psi/6.8 bar |
| For HVLP compliance: | See page 5 |
| Max. Fluid Pressure: | 120 psi/8.3 bar |
| Min./Max. Cylinder Actuating Pressure: | 50 psi/3.4 bar (min.), 100 psi/6.8 bar (max.) |
| Gun Body: | Stainless Steel, Aluminum |
| Fluid Path: | Stainless Steel |
| Fluid Inlet and Outlet Size: | 1/4" NPT(F) thread |
| Air Inlet Size: | Atomizing Air: 1/4" NPT(F) manifold body, 1/4" NPT x 1/4" NPS(M) fitting (loose) Fan Air: 1/4" NPT(F) manifold body, 1/4" soc head plug (M) fitting (loose) Cylinder Air: 1/8" NPT(F) manifold body, 1/8" NPT x 1/4" O.D. tube fitting (loose) |

Gun Weight with Manifold: 2.8 lbs. (1.27 kg)

Gun Mounting Hole: 1/2" Dia.

The MAG HVLP is approved to ATEX level II 2 G X and is suitable for use in Zones 1 and 2.

CA PROP
65

PROP 65 WARNING

WARNING: This product contains chemicals known to the State of California to cause cancer and birth defects or other reproductive harm.

Replaces
Part Sheet
77-2803R-10

Part
Sheet
77-2803R-11

⚠ WARNING



FLAMMABLE, EXPLOSIVE AND TOXIC VAPORS

**HIGH PRESSURE CAN CAUSE SERIOUS INJURY IF EQUIPMENT IS INSTALLED OR USED INCORRECTLY—
READ, UNDERSTAND, AND OBSERVE ALL WARNINGS
AND INSTRUCTIONS IN THIS MANUAL.**

**OPERATE EQUIPMENT ONLY AFTER ALL
INSTRUCTIONS ARE CLEARLY UNDERSTOOD.**

In this part sheet, the words **WARNING**, **CAUTION** and **NOTE** are used to emphasize important safety information as follows:

⚠ WARNING
Hazards or unsafe practices which could result in severe personal injury, death or substantial property damage.

⚠ CAUTION
Hazards or unsafe practices which could result in minor personal injury, product or property damage.

NOTE
Important installation, operation or maintenance information.

TOXIC FLUID HAZARD

- Know the specific hazards of the fluid you are using. This information is on the MSDS for the material being used. Read all fluid manufacturer warnings.
- Store hazardous fluids in approved containers only. Dispose of all hazardous fluids in accordance with all state, local and national guidelines.
- Wear the appropriate protective clothing, gloves, eyewear and respirator.

Equipment misuse can cause the equipment to fail, malfunction, or start unexpectedly and result in serious injury.

FIRE AND EXPLOSION HAZARD

- Ground the equipment and object being sprayed.
- Provide fresh air ventilation to avoid the build up of flammable fumes from the material being sprayed or from solvent.
- Extinguish all open flames or pilot lights in spray area.
- Electrically disconnect all equipment in the spray area.

- Keep the spray area free from all debris, including solvent rags.
- If there is any static sparking while using the equipment, **STOP SPRAYING IMMEDIATELY**. Identify and correct the problem.

EQUIPMENT MISUSE HAZARD

- This equipment is for professional use only.
- Read and understand all instructional manuals, tags, and labels before operating equipment.
- Use the equipment only for its intended purpose. If you are unsure about its purpose call your local Binks distributor.
- Do not alter or modify this equipment. Use only genuine Binks parts.
- Do not exceed the maximum working pressure of the lowest rated system component. **THE MAXIMUM RATING OF THE MAG HVLP GUN IS 120 P.S.I. DO NOT EXCEED THE FLUID PRESSURE RATING.**
- Route all hoses away from all sharp edges, moving parts, hot surfaces and high traffic areas.

- Do not use hoses to pull the equipment.
- Use only Binks approved hoses.
- Use only solvents compatible with hoses and wetted parts of the equipment used.
- Comply with all applicable local, state and national fire, electrical and other safety regulations.
- Improper grounding, poor air ventilation, open flame or sparks can cause a hazardous condition and result in fire or explosion and cause serious injury.

NOISE LEVELS

- The A-weighted sound level of spray guns may exceed 85 dB(A) depending on the setup being used. It is recommended that ear protection is worn at all times when spraying.

PROP 65 WARNING

- **WARNING:** This product contains chemicals known to the State of California to cause cancer and birth defects or other reproductive harm.

The automatic Spray Gun models listed in the following declaration of conformity may be used in some potentially explosive atmospheres ONLY when the special conditions for safe installation and operation have been followed as expressed in this user manual (Part Sheet). These models are approved to ATEX regulations 94/9/EC, protection level: II 2 G X: **Suitable for use in Zones 1 and 2.**

EC Declaration of Conformity

Manuf. By: Finishing Brands
195 Internationale Blvd.
Glendale Heights, IL 60139

Type/Series: Manifold Mounted Automatic Spray Guns

Model: MAG HVLP: 4006-, 4007-, 4008-, 4009-

The equipment to which this document relates is in conformance with the following standards or other normative references:
EN ISO 12100-1&2:2003 and BS EN 1953:1999 and thereby conform to the protection requirements of Council Directive 98/37/EC relating to Machinery Safety Directive, and;
EN 13463-1:2001, Council Directive 94/9/EC relating to **Equipment and Protective Systems for use in Potentially Explosive Atmospheres**, protection level II 2 G X.

Approved By: Chuck McCulloch
Chuck McCulloch, Finishing Brands

Date: April 17, 2006

CE ⚠

Finishing Brands reserves the right to modify equipment specification without prior notice.

MAG HVLP AUTOMATIC SPRAY GUN SET-UP INSTRUCTIONS — SPRAY INSTRUCTIONS**TO CHANGE FROM COMBINED FAN AND AIR TO SEPARATE FAN AND ATOMIZING AIR.**

1. Remove item (31) side port control by turning counter-clockwise with a 9/16 wrench.
2. Install item (37) allen head set screw into thread at the bottom of tapered cavity of where the side port was.
3. Install item (38) side port plug into the upper part of the threaded cavity of where the side port was.
4. Remove item (34) 1/4 NPT plug from the fan air port and replace it with item (35) D.M. nipple.

NOTE

When fan and atomizing air is separated, they both activate "ON" and "OFF" with cylinder air control.

SET UP FOR SPRAYING**Safe connection.**

- Verify that the gun is grounded per the automated machine manufacturer's recommendations.

Connect fluid hose to the manifold.

- Use 3/8" diameter material hose.
- Fluid fitting from hose assembly to 1/4" NPT(f) fluid inlet on manifold is not furnished.
- 1/4" diameter hose is recommended for low viscosity materials.

Connect atomizing air to the manifold.

- Install 1/4 NPS(m) x 1/4 NPT(m) fitting (furnished loose) in atomizing air port.
- Use 5/16" diameter or larger Air hose.

Connect cylinder air hose to manifold.

- Install 1/8 NPT(m) x 1/4 tube fitting (furnished loose) in cylinder air port.

Controlling the material flow.

- Increasing the material pressure will increase the flow rate.
- Correct fluid tip size helps insure correct material flow.

Adjusting the spray pattern.

- By adjusting the side port control you can get the full range of pattern adjustment when you have proper fluid and air flow.
- When set-up for remote fan air you achieve a larger pattern by increasing the air pressure to the fan port.

GENERAL SPRAY INSTRUCTIONS

1. Minimum cylinder actuating pressure is 50 PSI.
2. To reduce overspray and obtain maximum efficiency, always spray with the lowest possible fluid/air pressure that produces an acceptable pattern.
3. Cylinder air line (from the gun manifold to the solenoid valve) should be kept as short as possible for quick triggering.
4. All the air used in the gun should be dirt and moisture free. This is accomplished by using an oil and water extractor.
5. Shut off all the fluid and air lines to the gun if the gun is to stand idle for any length of time. This is to prevent build-up or accumulation of minute leaks in the system from turning the gun on.
6. The distance between gun and surface should be 6 to 12 inches depending on material and the atomizing pressure. The material deposited should always be even and wet. Lap each stroke over the proceeding stroke to obtain a uniform finish.
7. **CONTROLLING THE MATERIAL FLOW**
If necessary, fluid can also be adjusted by adjusting the amount of needle travel. This is done by loosening lock nut (2) and adjusting control knob (1) until the correct needle travel is achieved.
8. **ADJUSTING THE SPRAY PATTERN**
The width of the spray pattern is controlled by the side port control assembly (31). Turning this control clockwise until it is closed will give a round spray; turning it counterclockwise will widen the spray into a fan shape. The fan shape can be turned anywhere through 360 by positioning the air cap (20) relative to the gun. To effect this: loosen retainer ring, position nozzle, then re-tighten retainer ring.

MAG HVLP AUTOMATIC SPRAY GUN MAINTENANCE/TROUBLESHOOTING AND SERVICE INSTRUCTIONS

NOTE

Disassemble spray gun and remove all o-rings before immersing gun in or subjecting it to a flood-wash of cleaning solvent. Contact with solvents may induce o-ring swelling beyond their specification sizes and cause subsequent malfunction of the gun.

Use white lithium based grease to lubricate all o-rings and moving parts before reassembly into the gun body.

To further protect the environment, avoid storing solvents or solvent-soaked wipes, such as those used for surface preparation and cleanup, in open or absorbent containers.

TROUBLESHOOTING

Numbers in parentheses refer to individual items shown on the exploded drawing on page 7.

CAUTION

Never use metal instruments to clean or scrape fluid or air nozzles. These parts have been carefully machined and altering their shape will cause faulty spray.

WARNING

Be sure to follow all safety precautions described on page 2 before working on the spray gun. Never work on the spray gun until fluid pressure has been relieved throughout the system and the power or air supply for the fluid pump has been disconnected. Always test the repaired gun for leaks with low pressure fluid before use.

SERVICING/REPLACING FLUID NOZZLE AND FLUID NEEDLE ASSEMBLY

Service symptoms:

- *Build-up on air cap or clogged fluid nozzle assembly*
- *Fluid nozzle not sealing properly.*

1. Remove valve control (1). Lock-nut (2) and needle return spring (4). Pull item (8) needle assembly back or remove it so you don't damage the needle when servicing or replacing fluid nozzle. Service or replace fluid nozzle assembly and reassemble in reverse order. Lubricate needle with Copper PTFE Grease 540395 before inserting through fluid cartridge.

2. Turn retaining ring (19) counter clockwise and remove.
3. Remove air cap (20).
4. Turn fluid nozzle (21) counterclockwise and remove.
5. Service or replace and reassemble in reverse order.

REPLACING FLUID CARTRIDGE ASSEMBLY

Service symptoms:

- *Fluid leaking from weep port*

1. Turn end cap (3) counterclockwise and remove it with the piston and needle return spring from the piston body (25).
2. Remove fluid needle assembly (8).
3. Using the two 8-32 screws (41) provided in loose parts bag, thread the 8-32 screw into the two threaded holes in the back of the piston. Pull the two threaded screws and remove the piston.
4. Place the supplied 3/8" deep socket over fluid cartridge assembly (18) and turn it counter clockwise.
5. Remove and reassemble in reverse order using the new fluid cartridge assembly.

REPLACING O-RINGS ON PISTON ASSEMBLY

Service symptoms:

- *Atomizing air not cycling off*
- *Air not actuating fluid*

1. Turn end cap (3) counterclockwise and remove it with the piston return spring (7) and needle return spring (4) from the piston body (25).
2. Remove fluid needle assembly (8).
3. Using the two 8-32 screws (41) provided in loose parts bag, thread the two 8-32 screws into the two threaded holes in the back of the piston. Pull the two threaded screws and remove the piston.
4. Replace o-rings (13, 14, 16 and 17) using standard piston o-ring repair kit 54-5303 or high performance piston o-ring repair kit 54-5307.
5. Apply MG75 PTFE based lubricant provided in the o-ring repair kits to o-rings and reassemble in reverse order.

SERVICING/REPLACING OPTIONAL FILTER

Service symptoms:

- *Fluid tip clogging or restriction in fluid flow*

1. Using a 3/4" inch wrench, turn filter retainer (40) counterclockwise and remove.
2. Place a standard screwdriver inside the cavity where the filter (39) is housed and dislodge it by lifting up with the screwdriver. Remove filter and clean or replace as required. Most of the time you can dislodge the filter using your finger.
3. Reassemble in reverse order.

NOTE

O-ring (28) does not require replacement when servicing filter. Replace o-ring (28) if a leak develops around filter retainer (27).

REMOVING/REPLACING GUN ASSEMBLY MODULE ONLY FROM INLET MANIFOLD ASSEMBLY

1. Using a 9/64" Allen wrench, turn retaining cap screw (22) counterclockwise typical 4 places and remove gun sub module.

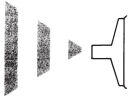
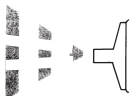


NOTE

O-rings (24 & 26) must be replaced when replacing gun sub module.

2. Mount the new gun module, tightening the retaining screws (22). This will allow fluid and air passages to seal with no contamination.

SPRAY PATTERN TROUBLESHOOTING

| |
|---|
| ⚠ CAUTION |
| Do not exceed 100 psi gun inlet pressure. Use air nozzle test gauge assembly to determine and verify exact nozzle operating air pressure. |

| PROBLEM | CAUSE | ACTION |
|---|--|--|
| Fluttering Spray Pattern  | Insufficient fluid supply. Air in paint supply line. | Adjust fluid regulator or fill fluid supply tanks. Check and tighten pump siphon hose connections, bleed air from paint line. |
| Striping Spray – Fingers  | Tip partially plugged. | Clean or replace tip assembly. |
| Irregular Pattern  | Fluid builds up on tip, or tip partially plugged. On defective side of pattern, air horn holes are plugged. | Clean tip. Clean air horn holes with solvent and a soft brush. |
| Pattern pushed to one side, same side of air cap gets dirty  | On defective side of pattern, air horn holes are plugged. | Clean air horn holes with solvent and a soft brush or toothpick. |

NOZZLE AND NEEDLE SELECTIONS—HVLP AIR NOZZLE

HVLP AIR NOZZLES 90P

| GUN INLET PSI | NOZZLE AIR FLOW SCFM | NOZZLE ATOMIZING PSI |
|---------------|----------------------|----------------------|
| 5.0 | 4.0 | 3.0 |
| 7.0 | 4.5 | 5.0 |
| 10.0 | 5.0 | 7.0 |
| 12.0 | 5.5 | 9.0 |
| 15.0 | 6.0 | 10.0 |

HVLP AIR NOZZLES 93P

| GUN INLET PSI | NOZZLE AIR FLOW SCFM | NOZZLE ATOMIZING PSI |
|---------------|----------------------|----------------------|
| 8.0 | 5.5 | 3.0 |
| 11.5 | 7.0 | 5.0 |
| 14.5 | 8.0 | 7.0 |
| 17.0 | 9.5 | 9.0 |
| 18.0 | 10.0 | 10.0 |

HVLP AIR NOZZLES 95P

| GUN INLET PSI | NOZZLE AIR FLOW SCFM | NOZZLE ATOMIZING PSI |
|---------------|----------------------|----------------------|
| 20.0 | 11.0 | 3.0 |
| 30.0 | 15.7 | 5.0 |
| 38.0 | 17.5 | 7.0 |
| 45.0 | 19.6 | 9.0 |
| 50.0 | 22.5 | 10.0 |

HVLP AIR NOZZLES 92P

| GUN INLET PSI | NOZZLE AIR FLOW SCFM | NOZZLE ATOMIZING PSI |
|---------------|----------------------|----------------------|
| 6.0 | 4.5 | 3.0 |
| 8.5 | 6.0 | 5.0 |
| 11.0 | 6.8 | 7.0 |
| 13.5 | 7.5 | 9.0 |
| 15.0 | 8.0 | 10.0 |

HVLP AIR NOZZLES 94P

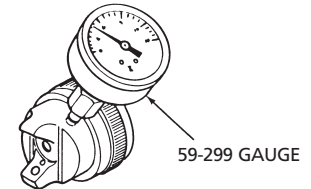
| GUN INLET PSI | NOZZLE AIR FLOW SCFM | NOZZLE ATOMIZING PSI |
|---------------|----------------------|----------------------|
| 14.0 | 7.0 | 3.0 |
| 21.0 | 9.0 | 5.0 |
| 27.0 | 11.0 | 7.0 |
| 30.0 | 12.0 | 9.0 |
| 33.0 | 13.0 | 10.0 |

HVLP AIR NOZZLES 100P

| GUN INLET PSI | NOZZLE AIR FLOW SCFM | NOZZLE ATOMIZING PSI |
|---------------|----------------------|----------------------|
| 3.0 | 3.2 | 2.0 |
| 6.1 | 4.8 | 4.0 |
| 9.0 | 6.0 | 6.0 |
| 11.6 | 6.9 | 8.0 |
| 14.3 | 8.0 | 10.0 |

AIR NOZZLE TEST GAUGE ASSEMBLY

| | | | |
|-----------------|--------------------|-----------------|--------------------|
| Part No. | Description | Part No. | Description |
| 54-3902 | 92P Nozzle | 54-4345 | 90P Nozzle |
| 54-3935 | 95P Nozzle | 54-4356 | 93P Nozzle |
| 54-4066 | 94P Nozzle | 54-5650 | 100P Nozzle |



FLUID NOZZLES—STANDARD NOZZLES

| Material | Part Number | Fluid Nozzle No. | Orifice Size (inches) | Orifice Size (mm) | Applicable Air Nozzle | Compatible Fluid Needle |
|---|-------------|------------------|-----------------------|-------------------|-------------------------------|--|
| Ultra Light: Reduced Flow | 45-8900 | 89 | 0.020 | 0.5 | 90P, 92P, 93P, 94P, 95P, 100P | 54-5360 – "90PF" Feathering Delrin Tip 54-5365 – "90SF" Feathering S.S. Tip |
| | 45-8902 | 89A | 0.025 | 0.6 | | |
| Very Light: Reduced Flow | 45-9000 | 90 | 0.030 | 0.8 | | |
| Light: less than 15 to 20 seconds in ZAHN 2 Cup, e.g., stains, varnishes, thin lacquers, automotive refinishing materials. | 45-9100 | 91 | 0.040 | 1.0 | 90P, 92P, 93P, 94P, 95P, 100P | 54-5370 – "AB" Delrin Tip 54-5375 – "ABSS" Stainless Steel Tip |
| | 45-9200 | 92 | 0.046 | 1.2 | | |
| | 45-9400 | 94 | 0.055 | 1.4 | | |
| | 45-9700 | 97 | 0.070 | 1.7 | | |

IMPORTANT REGULATORY NOTE

Some regulatory agencies prohibit the operation of HVLP spray guns above 10 PSI nozzle atomizing pressure. Users subject to this type of regulation should not exceed 10 PSI. It is recommended that the air nozzle test gauge assembly be used to confirm actual nozzle operation pressure.

It may also be a requirement of some regulatory agencies that user have this gauge nozzle available on site to verify that the gun is being operated within the limits of applicable rules.

MAG HVLP AUTOMATIC GUN SPECIFICATIONS

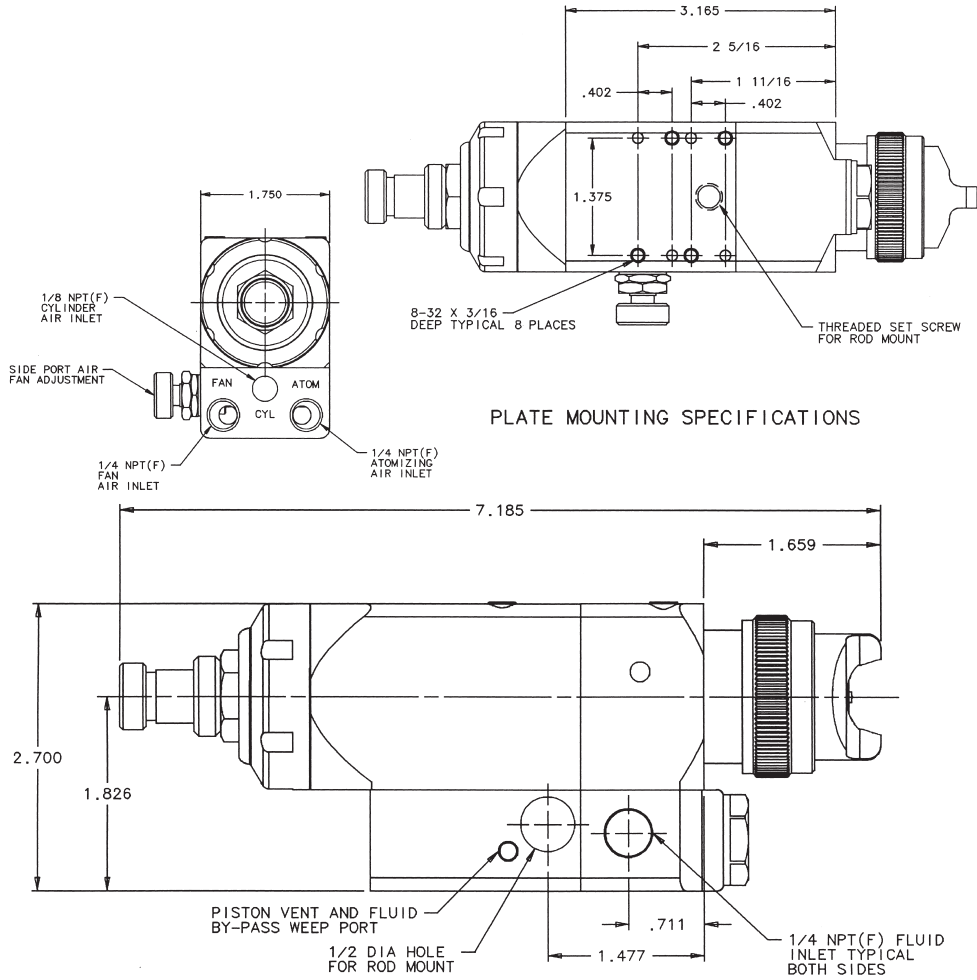
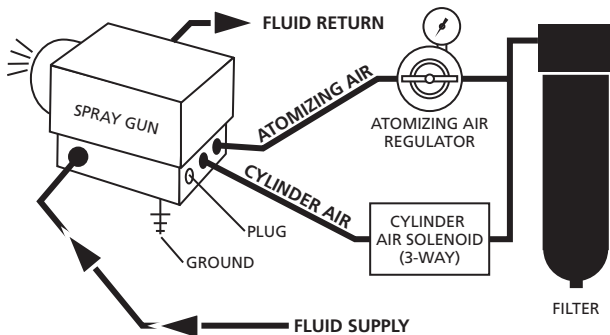


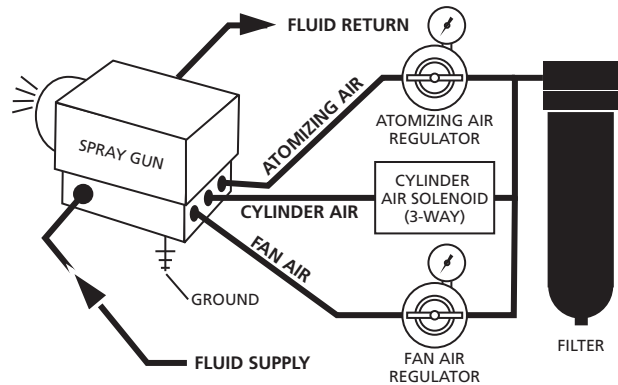
PLATE MOUNTING SPECIFICATIONS

MAG HVLP AUTOMATIC HOSE HOOK-UPS

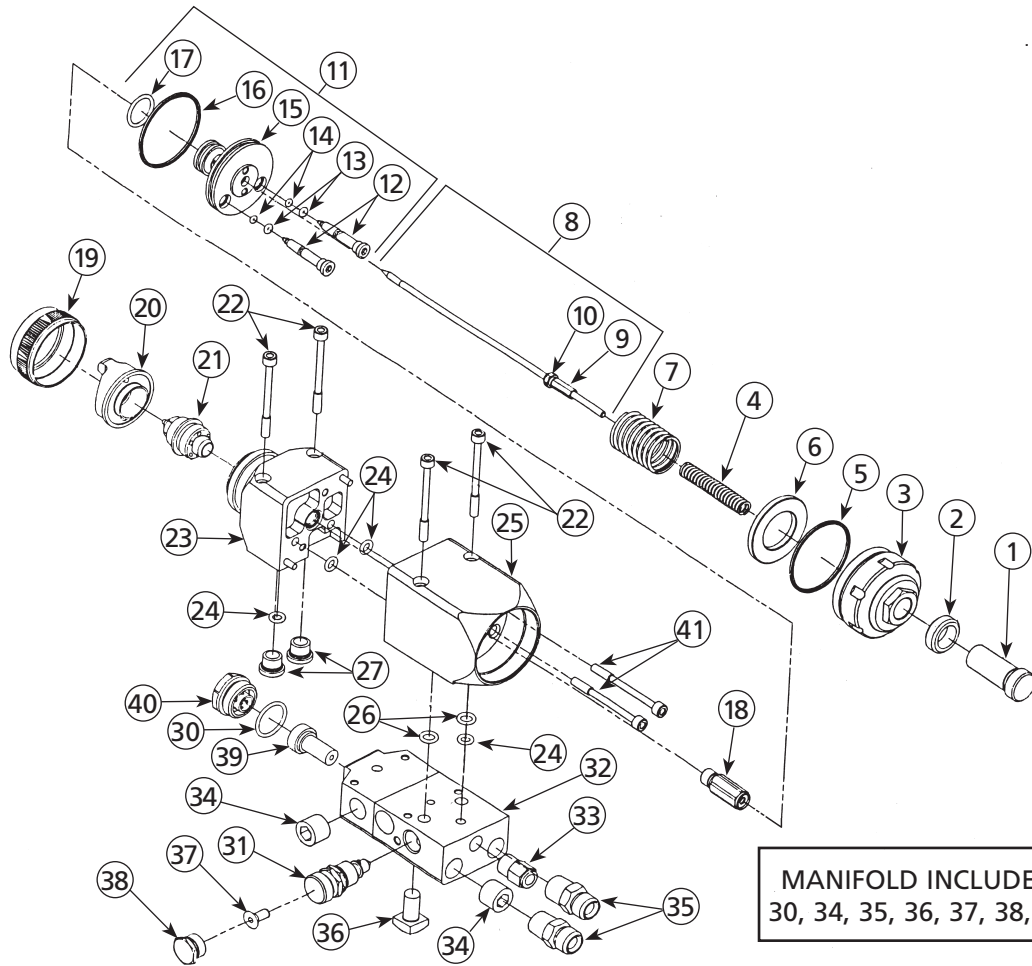
Hose Hook-Up with Atomizing/Fan Air COMBINED



Hose Hook-Up with Atomizing/Fan Air SEPARATED



MAG HVLP AUTOMATIC SPRAY GUN



PARTS LIST

When ordering, please specify Part No.
(Not all part numbers are available for purchasing.)

| ITEM NO. | PART NO. | DESCRIPTION | QTY. | ITEM NO. | PART NO. | DESCRIPTION | QTY. |
|----------|-----------|--|------|----------|-----------|--|------|
| 1 | 54-3731 | Material Valve Control Screw..... | 1 | 31 | 54-3720▲ | Side Port Control Assembly..... | 1 |
| 2 | 54-3732 | Control Screw Locknut..... | 1 | 32 | 54-5358 | Air/Fluid Inlet Junction Assy..... | 1 |
| 3 | 54-5356 | End Cap (HVLP Automatic)..... | 1 | 33 | 54-4945 | Tube Connector (1/8 NPT(M) x 1/4 Tubing)..... | ① |
| 4 | 54-5357 | Needle Return Spring..... | 1 | 34 | 20-6131 | 1/4 NPT Plug HEX Skt Hd S.S..... | ② |
| 5 | 20-6783• | Special O-Ring (029) (white)..... | 1 | 35 | 57-13-1◆ | 1/4 NPS x 1/4 NPT DM Nipple..... | ② |
| 6 | —• | Piston Impact Ring..... | 1 | 36 | 20-1359-1 | Screw Sq Hd 5/16-18 x 5/8..... | ① |
| 7 | 54-5332 | Piston Return Spring..... | 1 | 37 | —◆ | Screw 10-32 x 1/4 Flathead Allen Hd Pltd..... | ① |
| 8 | — | Needle Assembly..... | 1 | 38 | 102-2839◆ | Side Port Plug..... | ① |
| 9 | 54-3603 | Needle Cap..... | 1 | 39 | 54-1835* | 100 Mesh Filter Assembly..... | 1 |
| 10 | 54-3604 | Needle Locknut..... | 1 | | | (higher pressure) | |
| 11 | 54-5355 | Piston Assembly..... | 1 | 40 | 54-5340▲ | Filter Retaining Assembly..... | 1 |
| 12 | 54-5318 | Atomizing Air Valve..... | 2 | 41 | —‡ | Allen Socket HD 8-32 x 1-3/4 Lg...2+② | |
| 13 | 20-6785•★ | Special O-Ring (2-004) (white)..... | 2 | — | 20-3586 | Allen Wrench..... | ① |
| 14 | 20-6786•★ | Special O-Ring (2-003) (white)..... | 2 | — | 20-6751 | 3/8 Socket (Deep Well)..... | ① |
| 15 | — | Piston Body..... | 1 | | | | |
| 16 | 20-6783•★ | Special O-Ring (2-029) (white)..... | 1 | | | | |
| 17 | 20-6784•★ | Special O-Ring (2-015) (white)..... | 1 | | | | |
| 18 | 54-5350 | Low Pressure Fluid Cartridge Assy... 1 | | | | | |
| 19 | 54-3531 | Retaining Ring..... | 1 | | | | |
| 20 | — | Air Nozzle..... | 1 | | | | |
| 21 | — | Fluid Nozzle..... | 1 | | | | |
| 22 | —‡ | Retaining Ring Screw..... | 4 | | | | |
| 23 | 54-5353 | MAG HVLP Fluid Manifold Assy..... | 1 | | | | |
| 24 | 20-4615-5 | O-Ring (2-008) PTFE (5 Pack)..... | 5 | | | | |
| 25 | 54-5324 | Automatic Piston Housing..... | 1 | | | | |
| 26 | 20-3467• | O-Ring (2-010) PTFE..... | 2 | | | | |
| 27 | 54-5326 | Fluid Manifold Port Plug..... | 2 | | | | |
| 28 | 54-3918* | Gun Wrench (not shown)..... | 1 | | | | |
| 30 | 20-5921▲ | O-Ring (2-017) PTFE..... | 1 | | | | |

- Available as part of Rebuild Kit 54-5307.
- ★ May also be purchased separately.
- ‡ Available as part of 54-5333-K6.
- ▲ Item Nos. 30, 31 & 40 are part of 32 Manifold and are shipped loose.
- ①② Items shipped loose.
- ◆ Available as Dual Port Conversion Kit 54-5308.
- * Optional.

Tools provided with spray gun:
20-3586 ALLEN WRENCH (9/16")
20-6571 SOCKET WRENCH (3/8")

MAG HVLP AUTOMATIC SPRAY GUN

HOW TO ORDER

GUN COMBINATIONS AVAILABLE AS STANDARD WITHOUT AIR CAPS (ORDER AIR NOZZLES SEPARATELY)

| DESIGNATION NUMBER WITH MANIFOLD | FLUID NOZZLE ORIFICE (INCHES) | FLUID NOZZLE ORIFICE APPROX. (MM) | SUPPLIED WITH GUN | | NEEDLE TYPE | APPLICABLE AIR NOZZLES* |
|----------------------------------|-------------------------------|-----------------------------------|--------------------------|--------------------------|-----------------------|-------------------------|
| | | | FLUID NOZZLE DESIGNATION | FLUID NEEDLE DESIGNATION | | |
| 4006-1100-0 | 0.040 | 1.02 | 91 | AB | STANDARD – DELRIN TIP | 90P, 92P, 94P, 100P |
| 4006-1200-0 | 0.055 | 1.40 | 94 | AB | STANDARD – DELRIN TIP | 90P, 92P, 94P, 100P |
| 4006-1300-0 | 0.070 | 1.78 | 97 | AB | STANDARD – DELRIN TIP | 90P, 92P, 94P, 100P |
| 4006-1400-0 | 0.030 | 0.76 | 90 | AB | STANDARD – DELRIN TIP | 90P, 92P, 94P, 100P |
| 4006-1500-0 | 0.020 | 0.51 | 88 | 90PF | STANDARD – DELRIN TIP | 90P, 92P, 94P, 100P |
| 4006-1600-0 | 0.045 | 1.14 | 92 | AB | STANDARD – DELRIN TIP | 90P, 92P, 94P, 100P |
| 4006-4900-0 | 0.025 | 0.64 | 89A | 90PF | STANDARD – DELRIN TIP | 90P, 92P, 94P, 100P |
| 4008-1100-0 | 0.040 | 1.02 | 91 | ABSS | STANDARD – STAINLESS | 90P, 92P, 94P, 100P |
| 4008-1200-0 | 0.055 | 1.40 | 94 | ABSS | STANDARD – STAINLESS | 90P, 92P, 94P, 100P |
| 4008-1300-0 | 0.070 | 1.78 | 97 | ABSS | STANDARD – STAINLESS | 90P, 92P, 94P, 100P |
| 4008-1400-0 | 0.030 | 0.76 | 90 | 90SF | STANDARD – STAINLESS | 90P, 92P, 94P, 100P |
| 4008-1500-0 | 0.020 | 0.51 | 89 | 90SF | STANDARD – STAINLESS | 90P, 92P, 94P, 100P |
| 4008-1600-0 | 0.045 | 1.14 | 92 | ABSS | STANDARD – STAINLESS | 90P, 92P, 94P, 100P |
| 4008-4900-0 | 0.025 | 0.64 | 89A | 90SF | STANDARD – STAINLESS | 90P, 92P, 94P, 100P |

*Air caps are selected based on fluid flow rates and fluid viscosities. Consult Binks Tech Support team for further details.

| DESIGNATION NUMBER LESS MANIFOLD** | FLUID NOZZLE ORIFICE (INCHES) | NOZZLE ORIFICE APPROX. (MM) | FLUID NOZZLE DESIGNATION | FLUID NEEDLE DESIGNATION | NEEDLE TYPE | APPLICABLE AIR NOZZLES |
|------------------------------------|-------------------------------|-----------------------------|--------------------------|--------------------------|--------------|------------------------|
| 4007-0000-0 | NOT SUPPLIED | NOT SUPPLIED | NOT SUPPLIED | NOT SUPPLIED | NOT SUPPLIED | NOT SUPPLIED |

**NOTE: Order fluid nozzles, needles and air cap separately.

Standard Needles: • 90PF—Feathering (DELRIN) • AB—Standard (DELRIN)
 Optional Needles: • 90SF—Feathering (S.S.) • ABSS—Standard (S.S.)

CLEANING KIT

| PART NO. | DESCRIPTION |
|----------|---|
| 54-4994 | Cleaning Kit: includes one standard stiff nylon pipe cleaning brush, full-size nylon brush, tip cleaner, and Binks Gunners Mate Lubricant |

REPAIR KIT

| | |
|---------|--------------------------------|
| 54-5307 | REBUILD KIT CONSISTS OF: |
| 2 EA | 20-3467 RING O 1/4 ID X 3/8 OD |
| 1 EA | 20-6784 O-RING |
| 4 EA | 20-4615 O-RING |
| 2 EA | 20-6786 O-RING |
| 1 EA | 20-5921 O-RING |
| 2 EA | 20-6785 O-RING |
| 2 EA | 20-6783 O-RING |
| 1 EA | 54-5331 PISTON IMPACT RINGS |

WARRANTY

This product is covered by Binks' 1 Year Limited Warranty.

Binks Sales and Service: www.binks.com

ACCESSORIES

| PART NO. | DESCRIPTION |
|----------|--|
| 54-380 | Gun Mounting Bracket |
| 54-1835 | 100 Mesh Filter |
| 54-1836 | 60 Mesh Filter |
| 54-5340 | Filter Retainer Assembly |
| 54-3918 | Gun Wrench |
| 6-428 | Gun Lube (2 oz. bottle) |
| 6-429 | Gun Lube (20 bottles ref only) |
| 83-2484 | Fluid Inlet Stainless Nipple 1/4 NPT x 3/8 NPS |
| 54-5303 | Standard Performance Seal Kit |
| 54-5307 | High Performance Seal Kit |
| 54-5308 | Dual Port Conversion Kit |



U.S.A./Canada Customer Service
 195 Internationale Blvd.
 Glendale Heights, IL 60139
 630-237-5000

Toll Free Customer Service
 and Technical Support
 800-992-4657
 Toll Free Fax
 888-246-5732

77-2803R-11 Revisions: Trademark updates;
 (P8) Updated contact information.