

**WRA-101 | WRA-200 | LRA-200**



**WRA-101**



**WRA-200**



**LRA-200**

TECHNICAL							
<b>WRA-101</b>							
WRA-101-082P	0.8	E2P	CAP 2.7/39 FAN 2.1/31	20	9.5	190	
<b>WRA-200</b>							
WRA-200-122P	1.2	G2P	CAP 2.7/39 FAN 2.3/34	500	18.7	400	
<b>LRA-200</b>							
LRA-200-082P	0.8	G2	CAP 1.6/23 FAN 1.4/20	400	17.7	250	
LRA-200-122P	1.2			500		300	

**WRA-101** Air Nipple: Rc 1/4" • Fluid Nipple: Rc 1/4"  
**WRA/LRA-200** Air Nipple: Rc 1/8" • Fluid Nipple: Rc 1/8"

**ORDER Information - WRA-101**

<b>WRA-101</b>	<b>Ø 0.8</b>	<b>Ref.</b>
AUTOMATIC SPRAY GUN	5630B	-
NOZZLE + NEEDLE SET	93831621	2
AIR CAP SET - E2P	93704610	1

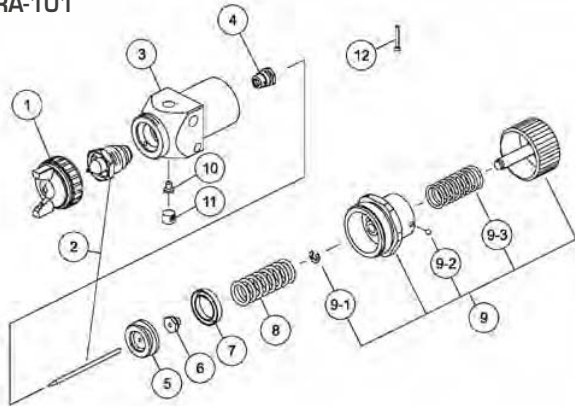
**ORDER Information - WRA-200**

<b>WRA-200</b>	<b>Ø 1.2</b>	<b>Ref.</b>
AUTOMATIC SPRAY GUN	5635	-
NOZZLE + NEEDLE SET	93834620	2
AIR CAP SET - G2P	93818611	1

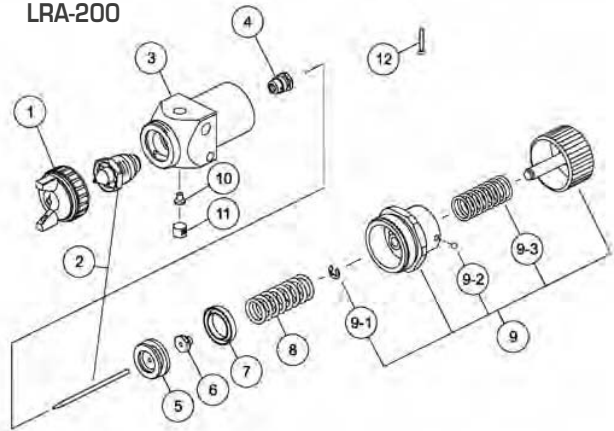
**ORDER Information - LRA-200**

<b>LRA-200</b>	<b>Ø 0.8</b>	<b>Ø 1.2</b>	<b>Ref.</b>
AUTOMATIC SPRAY GUN LRA-200-082P	5636	-	-
AUTOMATIC SPRAY GUN LRA-200-122P	-	5307	-
NOZZLE + NEEDLE SET	93857620	-	2
NOZZLE + NEEDLE SET	-	93835620	2
AIR CAP SET - G2	93822601		1

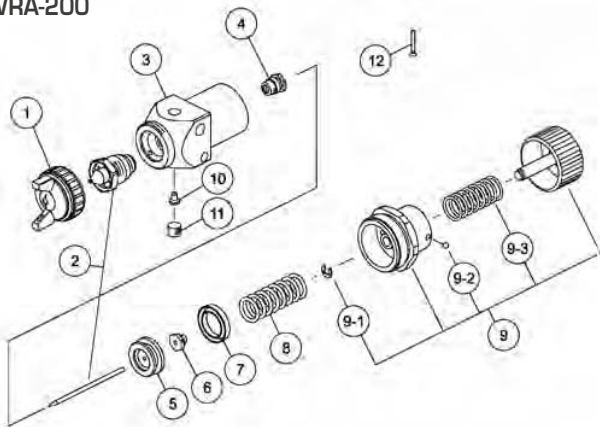
**WRA-101**



**LRA-200**



**WRA-200**



**SPARE PARTS**

Ref.	Code	Description	WRA-101	WRA-200	LRA-200
1	93704610	AIR CAP SET E2P	X		
1	93818611	AIR CAP SET G2P		X	
1	93822601	AIR CAP SET G2			X
2		NOZZLE/NEEDLE SET	X	X	X
4	93847580	NEEDLE PACKING SET	X	X	X
5	93629570	PISTON	X	X	X
6	93455230	NUT	X	X	X
7	93903440	PISTON PACKING (2 pcs./1 pk.)	X	X	X
8	94003880	PISTON SPRING	X	X	X
9	93840581	FLUID ADJUSTMENT SET	X		
9	93840581	FLUID ADJUSTMENT SET		X	X
9-1	93912030	STOPPER (2 pcs./1 pk.)	X	X	X
9-2	93914730	BALL (2 pcs./1 pk.)	X	X	X
9-3	93104420	FLUID ADJ. SPRING	X	X	X
10	93526620	PLUG	X	X	X
11	96990440	PLUG WITH HEXAGON HOLE	X	X	X
12	96172529	SCREW	X	X	X