

W-400



W-400 with PCG6PM Cup

See page 50 for cup options (sold separately)

FEATURES

- High transfer efficiency spray gun
- Superior automation
- Ideal for general purpose use
- Quality surface for easy cleaning
- Minimal wear parts for easy maintenance

TECHNICAL

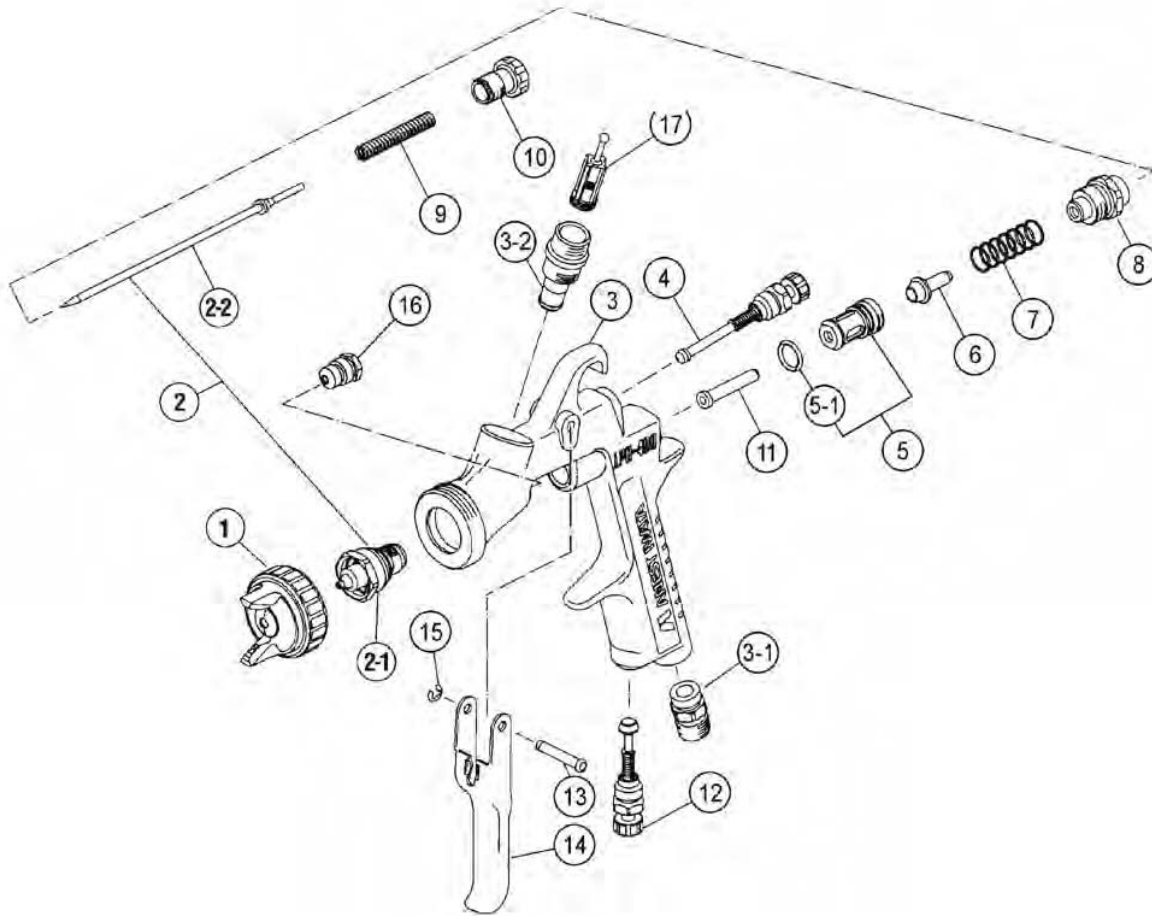


W-400						
W-400-122G	1.2	LV2	2.0/29	140	9.9	175
W-400-132G	1.3			160		225
W-400-142G	1.4			210		270
W-400-162G	1.6	LV1		240	10.2	260
W-400-182G	1.8			320		260
W-400-251G	2.5	W1		580	12.7	340

• Air Nipple: G1/4" • Fluid Nipple: M16 X 1.5m

ORDER Information - W-400

	ø 1.2	ø 1.3	ø 1.4	ø 1.6	ø 1.8	ø 2.5
GRAVITY SPRAY GUN	4700	4725	4705	4710	4715	4720
GRAVITY SPRAY GUN + PCG6PM - 600 ml	4702	4727	4707	4712	4717	4722
GRAVITY SPRAY GUN + PCG7EM - 700 ml	4702T	4727T	4707T	4712T	4717T	4722T
GRAVITY SPRAY GUN + PCG10EM - 1000 ml	4702U	4727U	4707U	4712U	4717U	4722U
NOZZLE + NEEDLE SET	93891610	93881610	93831610	93832610	93821610	93819610
AIR CAP SET	LV2 93830611			LV1 93859611		W1 93813611



SPARE PARTS

Ref.	Code	Description	
1		AIR CAP SET	
2		NOZZLE + NEEDLE SET	
3-1	93660300	AIR NIPPLE	1/4"
3-2	93650531	FLUID NIPPLE	M16X1.5
4	93842601	PATTERN ADJ. SET	
5	93843530	AIR VALVE SEAT SET	
5-1	96638008	O RING	
6	93591530	AIR VALVE	
7	93719530	AIR VALVE SPRING	
8	93844532	FLUID ADJUST GUIDE SET	
9	93593530	FLUID NEEDLE SPRING	
10	93594532	FLUID ADJUST KNOB	
11	93935430	AIR VALVE SHAFT	
12	93845531	AIR ADJUST SET	
13	93667360	TRIGGER STUD	
14	93517600	TRIGGER	
15	93912030	STOPPER	(2 PCS./1PK.)
16	93765610	CARTRIDGE PACKING	
17	93515500	FILTER	60 MESH

ACCESSORIES

Ref.	Code	Description
	93708240	AIR CAP PACKING (WHITE)
	93512600	AIR CAP PACKING (BLACK)
	2950	MK5 MAINTENANCE KIT
	5650	REPAIR SERVICE KIT (includes: 4, 7-1, 9, 11, 15, 17)