

NON-HVLP CONVENTIONAL PRESSURE | SIPHON | GRAVITY SPRAY GUNS



W-101-P | W-101-S | W-101-G



W-101-P

W-101-S with
PCL 10B2

W-101-G with
PC5 Cup

TECHNICAL		Ø mm	No.	bar/psi	ml/min	CFM	mm
W-101-P							
W-101-082P	0.8	E2P		3.0/ 43.5	150	9.5	190
W-101-102P	1.0				200	9.5	220
W-101-132P	1.3			2.5/ 36.3	200	7.8	210
W-101-152P	1.5				250	7.8	240
W-101-S							
W-101-101S	1.0	E1		2.5/ 36.3	85	2.6	120
W-101-131S	1.3	K1			150	5.1	155
W-101-132S	1.3	H2			200	7.9	160
W-101-151S	1.5	K1			200	5.1	170
W-101-152S	1.5	H2			170	7.9	175
W-101-181S	1.8	N1			210	6	170
W-101-G							
W-101-101G	1.0	E1		2.5/ 36.3	95	2.6	130
W-101-131G	1.3	K1			160	5.1	170
W-101-132G	1.3	H2			200	7.9	175
W-101-151G	1.5	K1			200	5.1	180
W-101-152G	1.5	H2			190	7.9	190
W-101-181G	1.8	N1			240	6	190

Air Nipple: G1/4" • Fluid Nipple: G1/4"

See page 52
for cup options
(sold separately)

ORDER Information - W-101-P Pressure

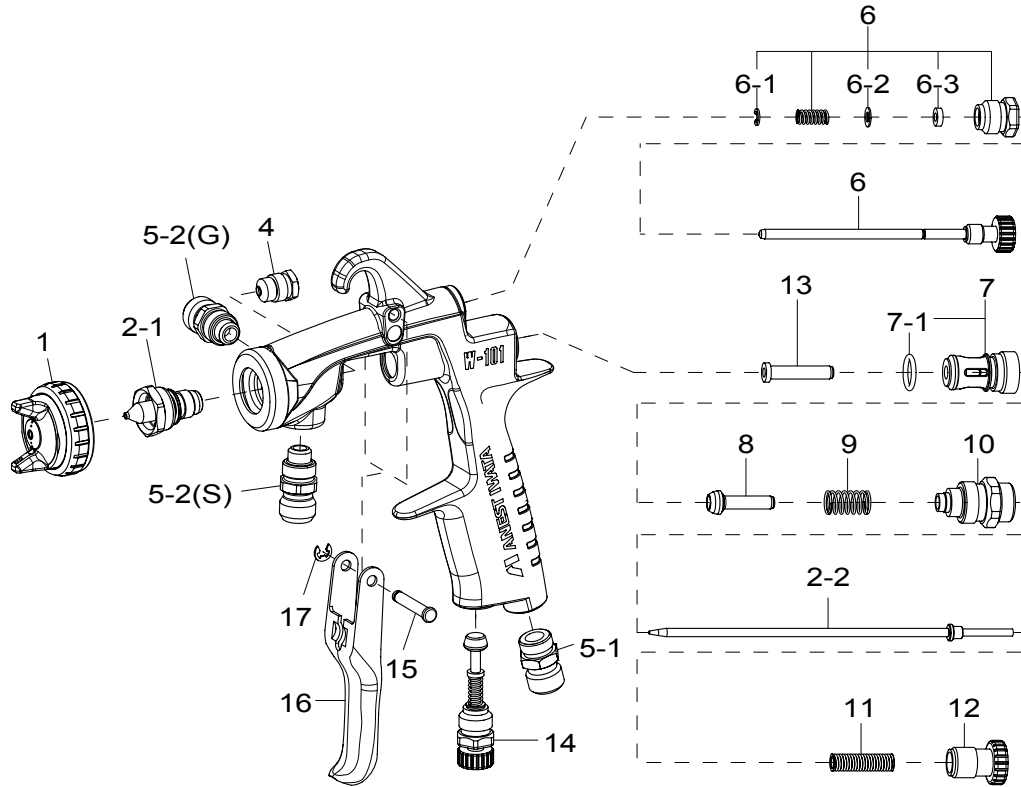
	Ø 0.8	Ø 1.0	Ø 1.3	Ø 1.5
PRESSURE SPRAY GUN W-101-P	4400B	4403B	4405B	4407B
NOZZLE + NEEDLE SET	93706610	93691610	93666610	93698610
AIR CAP SET	E2P 93704610			

ORDER Information - W-101-S Siphon

	Ø 1.0	Ø 1.3 (K1)	Ø 1.5 (K1)	Ø 1.3(H2)	Ø 1.5(H2)	Ø 1.3(H4)	Ø 1.8
SIPHON SPRAY GUN W-101-S	4420B	4425B	4435B	4430B	4440B	4580B	4445B
SIPHON SPRAY GUN + PCL 7B2 - 700ML	4421B	-	-	4431B	4441B	4581B	4446B
SIPHON SPRAY GUN + PCL 10B2 - 1000ML	4422B	-	-	4432B	4442B	4582B	4447B
NOZZLE + NEEDLE SET	93691610	93667610	93698610	93667610	93698610	93667610	93703610
AIR CAP SET	E1 93689610	K1 93735610		H2 93696610		H4 93662610	N1 93700610

ORDER Information - W-101-G Gravity (side feed)

	Ø 1.0	Ø 1.3 (K1)	Ø 1.5 (K1)	Ø 1.3(H2)	Ø 1.5(H2)	Ø 1.3(H4)	Ø 1.8
GRAVITY SPRAY GUN W-101-G	4450B	4455B	4565B	4560B	4570B	4585B	4575B
GRAVITY SPRAY GUN + PC 4S - 400ML	4451B	4456B	4566B	4561B	4571B	4586B	4576B
GRAVITY SPRAY GUN + PC5 - 200ML	4452B	4457B	4567B	4562B	4572B	4587B	4577B
NOZZLE + NEEDLE SET	93691610	93667610	93698610	93667610	93698610	93667610	93703610
AIR CAP SET	E1 93689610	K1 93735610		H2 93696610		H4 93662610	N1 93700610



SPARE PARTS

Ref.	Code	Description	
1		AIR CAP SET	
2		NOZZLE + NEEDLE SET	
2-2	93504700	SPECIAL NEEDLE with TIP in Delrin	ø 0.8/1.0
	9W-200-X17-1	NEEDLE TIP in Delrin	ø 0.8/1.0/1.2
4	93765610	NEEDLE PACKING CARTRIDGE	
5-1	93660300	AIR NIPPLE	
5-2	93584530	FLUID NIPPLE G 1/4" - 1/4"	gravity/siphon
5-2	93515600	FLUID NIPPLE P 1/4" - 3/8"	pressure
6	93842531	PATTERN ADJUSTMENT SET	
7	93843530	AIR VALVE SEAT SET	
7-1	96638008	O RING	
8	93591530	AIR VALVE	
9	93719530	AIR VALVE SPRING	
10	93844532	FLUID ADJUSTMENT GUIDE	
11	93593530	FLUID NEEDLE SPRING	
12	93594532	FLUID ADJUSTMENT KNOB	
13	93935430	AIR VALVE SHAFT	
14	93845531	AIR ADJ. SET	
15	93667360	TRIGGER STUD	
16	93597530	TRIGGER	
17	93912030	E STOPPER	2 pcs./1 pk.

ACCESSORIES

Ref.	Code	Description
	6008	PC 4S SIDE GRAVITY CUP 400 ml
	6019	PCL 7B 2 SIPHON CONTAINER 700 ml
	93576530	AIR CAP "L" PACKING (BLACK)
	93708320	AIR CAP GASKET (WHITE)
	5650	REPAIR SERVICE KIT (includes: 4, 7-1, 9, 11, 15, 17)