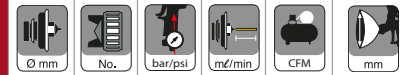




### FEATURES

- Heavy-duty lightweight pressure feed HVLP spray gun is supplied with a standard spray set-up for industrial applications and higher viscosity materials
- Utilizing LV Technology and tulip inspired spray pattern, allowing for superior atomization with minimal overspray
- Contact Anest Iwata for additional nozzle sizes and/or materials
- LPH-200-LVP is Ideal for fine finishing, base, single stage, and clear
- LPH-200-P is ideal for primer and DTM coatings

### TECHNICAL

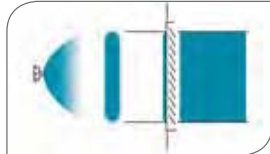


Model	Ø mm	No.	bar/psi	ml/min	CFM	mm
<b>LPH-200-P</b>						
LPH-200-102P	1.0	G2	1.9/28	300	17.7	250
LPH-200-122P	1.2					300
LPH-200-142P	1.4					300
LPH-200-162P	1.6			500		320
LPH-200-182P	1.8					300
LPH-200-202P	2.0					300
<b>LPH200-LVP</b>						
LPH-200-086LVP	0.8	LV6	2.4/35	200	14.6	450
LPH-200-106LVP	1.0					250
LPH-200-126LVP	1.2					300
LPH-200-136LVP	1.3			300		
LPH-200-146LVP	1.4			300		
LPH-200-156LVP	1.5			300		
<b>LPH-2003</b>						
LPH-2003-102P	1.0	G2	2.0/28	N/A	17.7	272
LPH-2003-122P	1.2					300
LPH-2003-142P	1.4					318

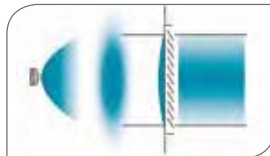
Air Nipple: G1/4" • Fluid Nipple: G3/8" LPH-2003: M16X1



LV Technology Split Nozzle



Round Nozzle



### ORDER Information - LPH-200-P Pressure

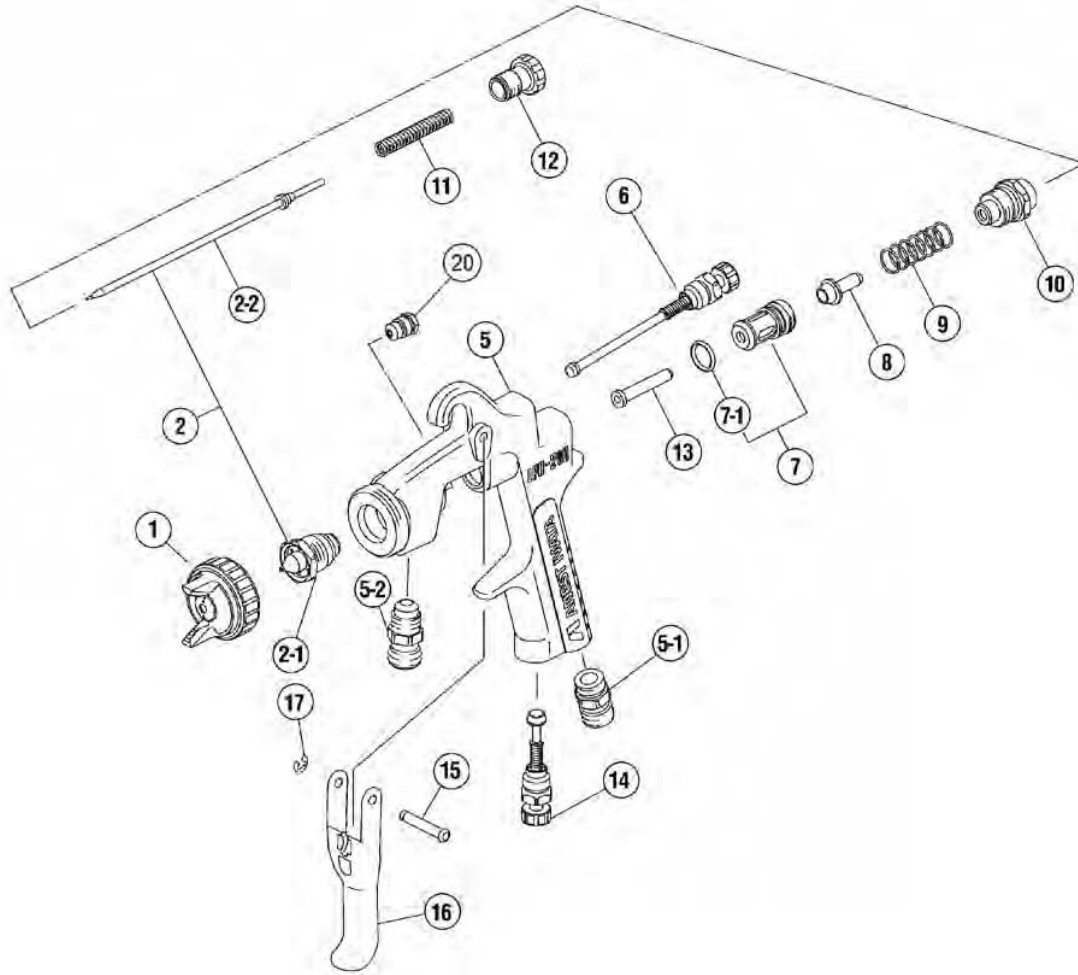
	Ø 1.0	Ø 1.2	Ø 1.4	Ø 1.6	Ø 1.8	Ø 2.0
PRESSURE SPRAY GUN LPH-200-P	5403	5400	5405	5418	5421	5422
NOZZLE + NEEDLE SET	93859600	93858600	93860600	9LPH-200-162P10	9LPH-200-182P10	9LPH-200-X1-100
AIR CAP SET	93822601					

### ORDER Information - LPH-200-LVP Pressure

	Ø 0.8	Ø 1.0	Ø 1.2	Ø 1.3	Ø 1.4	Ø 1.5
PRESSURE SPRAY GUN LPH-200-LVP	5406	5407	5408	5419	5409	5413
NOZZLE + NEEDLE SET	93593600	93594600	93595600	9LPH200136L-VP-1	9LPH200-14LV-10	9LPH200156L-VP-1
AIR CAP SET	93587601					

### ORDER Information - LPH-2003 Pressure

	Ø 1.0	Ø 1.2	Ø 1.4
PRESSURE SPRAY GUN LPH-2003	5411	5410	5412
PRESSURIZED SPRAY GUN + PC19B	5416	5415	5417
NOZZLE + NEEDLE SET	93859600	93858600	93860600
AIR CAP SET	93822601		



**SPARE PARTS**

Ref.	Code	Description	Qty.
1		AIR CAP SET	
2		NOZZLE/NEEDLE SET	
5-1	93660300	AIR INLET	1/4"
5-2	93515600	FLUID NIPPLE	3/8"
5-2	93161710	FLUID NIPPLE	M16X1
6	93840601	PATTERN ADJUST SET	LPH-200-P
6	93898600	PATTERN ADJUST SET	LPH-200-LVP
7	93843530	AIR VALVE SEAT SET	
7-1	96638008	O RING	
8	93591530	AIR VALVE	
9	93719530	AIR VALVE SPRING	
10	93844532	FLUID ADJUST GUIDE SET	
11	93593530	FLUID NEEDLE SPRING	
12	93594532	FLUID ADJUST KNOB	
13	93935430	AIR VALVE SHAFT	
14	93845531	AIR ADJUST SET	
15	93667360	TRIGGER STUD	
16	93517600	TRIGGER	
17	93912030	STOPPER	2 Pcs. / 1 pk.
20	93765610	CARTRIDGE PACKING	

**ACCESSORIES**

Ref.	Code	Description
	93512600	L GASKET (BLACK)
	93708240	AIR CAP GASKET (WHITE)
	93910710	GASKET (LPH-2003)
	5650	REPAIR SERVICE KIT (Includes: 4, 7-1, 9, 11, 15, 17)
	2950	MK5 MAINTENANCE KIT
	93538600	GUN WRENCH
	2991	TEST CAP GAUGE SET G2
	2992	TEST CAP GAUGE SET LV6