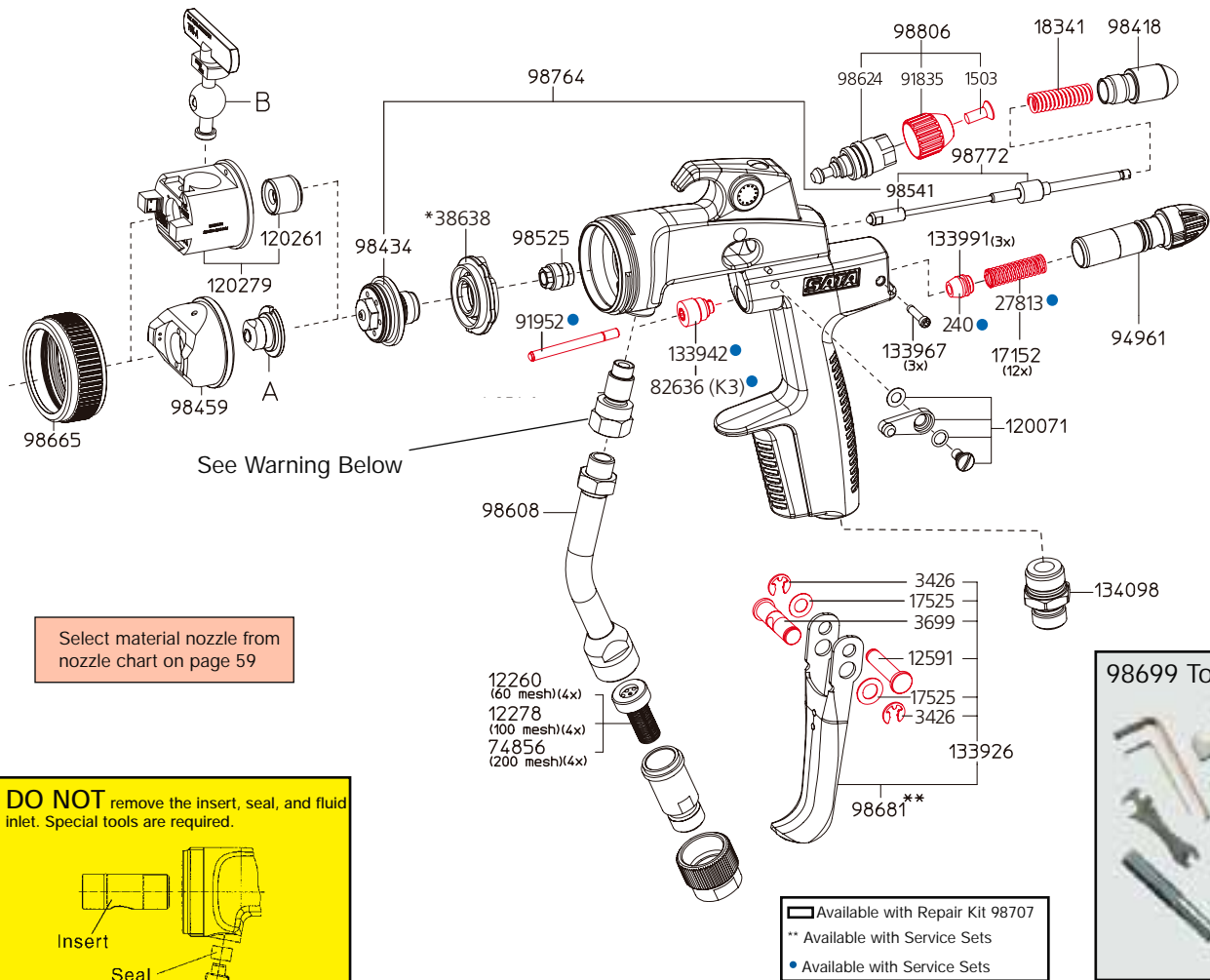


Replacement parts:

Formerly SATAjet K3 spray mix



# SATAjet 3000 K spray mix (Air Assist Airless Gun)

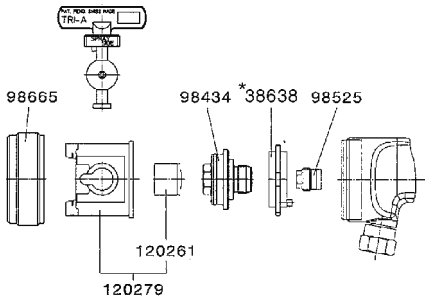


Select material nozzle from nozzle chart on page 59

**DO NOT** remove the insert, seal, and fluid inlet. Special tools are required.

CALL SATA repair department for details.

**Reversing nozzle**  
see nozzle chart on page 63\*



Available with Repair Kit 98707  
 \*\* Available with Service Sets  
 Available with Service Sets

Part#	Description	Part#	Description
240	Air piston packing	98442	Seal ring, pre-nozzle
1503	Fan control screw	98459	Air cap, round/flat
3426	Circlip, pin	98525	Packing holder
3699	Pin, lower trigger	98541	Needle tip
12260	Sieve, 60 msh, pkg of 4	98608	Paint pipe, 1/4 w/100 msh filter
12278	Sieve, 100 msh, pkg of 4	98624	Fan control
12591	Pin, upper trigger	98665	Air cap ring
17152	Air piston spring, pkg of 12 #27813	98681	Trigger service set
17525	Lock spring	98699	Tool kit, Sp. Mix
18341	Needle spring	98764	Pre-nozzle w/needle tip
27813	Air piston spring	98772	Needle w/needle tip
38638	Air ring, spray mix	98806	Fan control service set
38638-3	Air ring, pk of 3	120071	Trigger lock, complete
38638-5	Air ring, pk of 5	120261	Seal, reversing nozzle
*38638-20	Air ring, pk of 20	120279	Reversing switch
74856	Sieve, 200 msh, pkg of 4	133926	Trigger service set
91835	Knob	133942	Air piston packing holder
91952	Air piston	133967	Pin, micrometer set of 3
94961	Air micrometer	133991	Air piston Packing set of 3
98418	Fluid control knob	134098	Air inlet fitting sp. mix
98434	Pre-nozzle		

\*Using a reversing nozzle requires a "one time" purchase of the reversing switch.  
**Part Number 120279**