



Corrosion Control

P100H

P200C

Glue

P100G

P100G - Water Base

Zinc

P200Z

AIR CAP AND FLUID NOZZLE CHART

MODEL NO.	AIR CAPS	Air Cap Ring	Fan Control	*SUGGESTED GUN INLET PRESS.	AVAILABLE FLUID NOZZLES	NEEDLES / marking on needle
P100H	21-1095T	21-1001	60-1502	50	31-0214 1.4mm (.055")	40-1100 (100)
					31-0215 1.5mm (.059")	
					31-0216 1.6mm (.063")	
					31-0217 1.7mm (.070")	
P100G	21-2266T	Included	60-1500	45	31-0618 1.8mm (.070")	40-1115 (115)
	21-2266-3T					
P100G Waterbased	21-1590-08	Included	60-1500	45	31-1593-08 0.8mm (.022")	40-1508
	21-1590-18				31-1593-18 1.8mm (.070")	40-1518
P200C	22-2064T	Included	60-1500	50	32-0618 1.8mm (.070")	40-1218 (218)
	22-2062T			50	32-0622 2.2mm (.086")	40-1222 (222)
				50	32-0628 2.8mm (.110")	40-1228 (228)
P200Z	22-2062T	Included	60-1500	50	32-2118Z 1.8mm (.070")	40-1218 (218)
	22-2064T			50	32-2122Z 2.2mm (.086")	40-1222 (222)
				50	32-2128Z 2.8mm (.110")	40-1228 (228)

Operation and Maintenance Instructions for *Panther* Spray Guns

Operation

1. Connect air supply hose at handle of gun.
2. Connect a pressurized fluid supply or paint siphon cup to the gun fluid inlet.
3. Fluid flow can be controlled using the fluid control knob, this restricts flow by limiting needle travel. It is best to control fluid flow by proper selection of fluid orifice size and use the fluid control knob to “fine tune flow rate”.
4. Fan width can be adjusted using the fan control knob. Turning the knob clockwise narrows the fan.

Maintenance

IMPORTANT! Routine cleaning and maintenance is essential to insure proper gun operation. Several states prohibit spraying solvent into the atmosphere and require the use of covered gun cleaner.

1. If a gun cleaner is being used, connect and clean the gun in the gun cleaner according to the manufactures instructions.
2. If a gun cleaner is not being used:
 - For pressure setups, remove air cap and clean separately using clean solvent.
 - Connect a pressurized solvent supply to the fluid inlet, trigger the gun allowing solvent to flow thru the gun until clean.
 - For siphon setups, first clean the siphon cup thoroughly then spray clean solvent thru the gun until clean.

NOTE: Gun head disassembly is not recommended for normal cleaning and maintenance.

Items 29, 30, 31 and 32 replace items 1, 2, 3 and 13 for model P100G water based setup.

Gun head disassembly and reassembly instructions:

Gun head disassembly

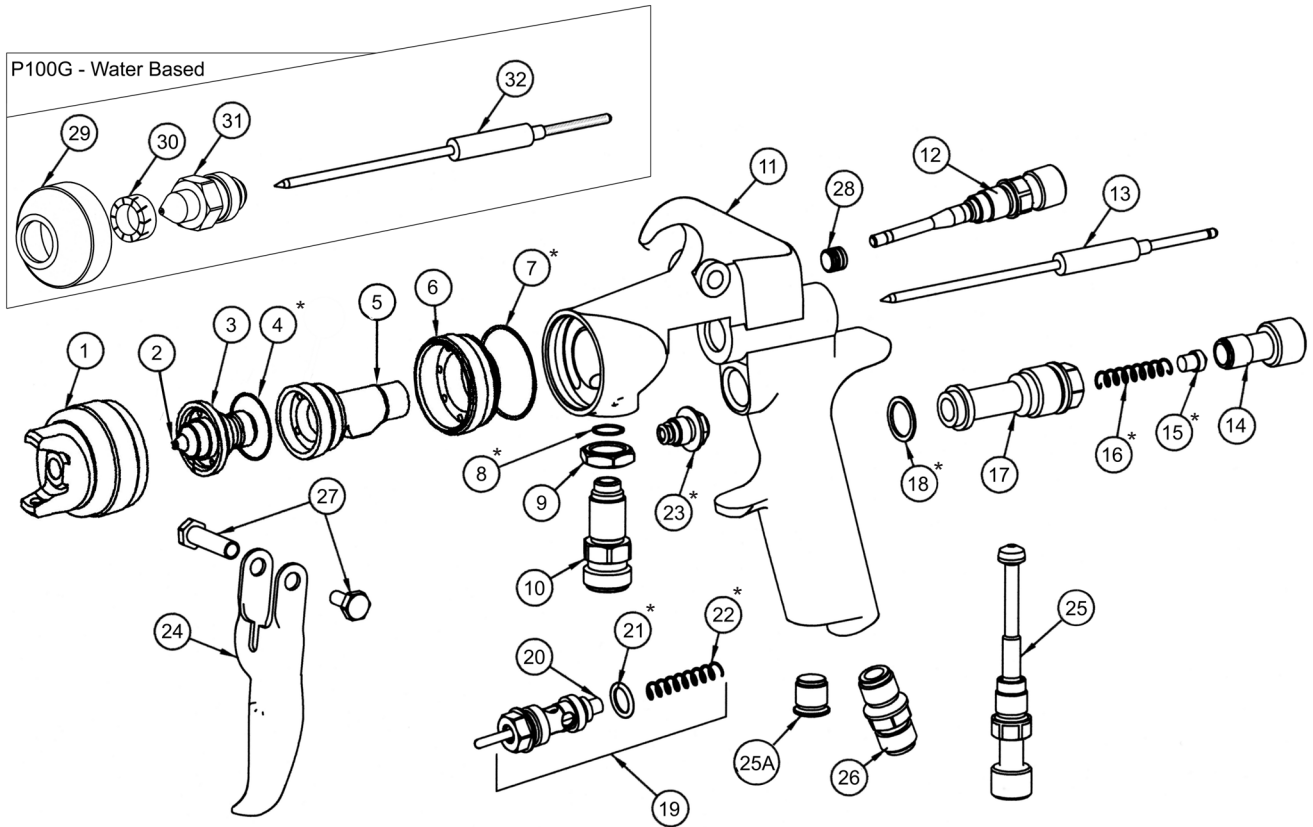
To remove the nozzle carrier (5) and air cap adapter (6):

1. Remove the air cap (1), fluid nozzle tip (2), fluid nozzle body (3), and needle (13)
2. Remove the needle seal cartridge (23)
3. Loosen the locknut (9) and remove fluid inlet (10) using a 5/8” open-end wrench
4. The nozzle carrier and air cap adapter will now slide forward from the gun body (11).

Gun head reassembly

1. Install a new o-ring (7) on the air cap adapter.
2. Install the thread locknut (9) onto the fluid inlet as far as possible.
3. Slide the nozzle carrier (5) into air cap adapter (6) and insert into the gun body as far as possible. Be sure the nozzle carrier extends into the hole at the back of the gun head. Install the needle seal (23) but do not tighten.
4. Rotate the nozzle carrier until the fluid inlet port in the nozzle carrier is aligned with the threaded hole in the body. While in this position, insert the fluid inlet (10) and tighten firmly.
5. Tighten the needle seal (23) to approx. 12 ft.-lb. torque.
6. Tighten the fluid inlet (10) to approx. 25 ft.-lb. torque.
7. Tighten the locknut (9) to approx. 33 ft.-lb. torque.

P100G - Water Based



PANTHER MODEL	ITEM 3	ITEM 4	ITEM 5	ITEM 6	ITEM 23	Repair Kit
P100H	31-1201	Not Used	60-L11H	60-12H	60-1400	10-110
P100G	31-2201	61-1005	60-L11C	60-12C	60-1400	10-110
P100G - WB	See Air Cap Chart	Not Used	60-L11C	60-12C	60-1400	10-106
P200C	32-2201	98-8020	60-L21C	60-22	60-1400	10-106
P200Z	See Air Cap Chart	98-8020	60-L21C	60-22	60-1402	10-108

ITEM NO.	PART NO.	DESCRIPTION	ITEM NO.	PART NO.	DESCRIPTION
1	See Air Cap Chart	Air Cap	17	60-201	Rear Bushing
2	See Air Cap Chart	Fluid Nozzle Tip	18	60-119	Seal*
3	See Panther Model	Fluid Nozzle Body	19	60-1520	Air Valve Assembly
4	See Panther Model	Gasket*	20	60-302**	Air Valve Poppet
5	See Panther Model	Nozzle Carrier	21	60-125	O-Ring*
6	See Panther Model	Air Cap Adapter	22	61-1003	Air Valve Spring*
7	60-131	O-Ring*	23	See Panther Model	Needle Seal Cartridge
8	60-124	Fluid Inlet Seal	24	60-2101	Trigger
9	60-128	Locknut	25	60-1510	Air Control
10	60-126	Fluid Inlet Fitting	25A	60-122	Plug (optional)
11	60-1125	Panther Gun body CONV.	26	60-104	Air Inlet Fitting
	60-1116	Panther Gun body HVLP	27	60-1033	Trigger Pivot Set
12	See Air Cap Chart	Fan Control Assembly	28	98-109	Allen Plug
13	See Air Cap Chart	Fluid Needle	29	21-1592	Housing
14	60-202	Fluid Control Knob	30	21-1591	Swirl Insert
15	60-209	Spring Seat*	31	See Air Cap Chart	Nozzle
16	60-206	Needle Return Spring*	32	See Air Cap Chart	Needle

*Indicates part included in repair kit # 10-108 & 10-110

Note: Items 29, 30, 31, 32 and replace items 1, 2, 3, and 13 for the model P100G 1590 water based setup

